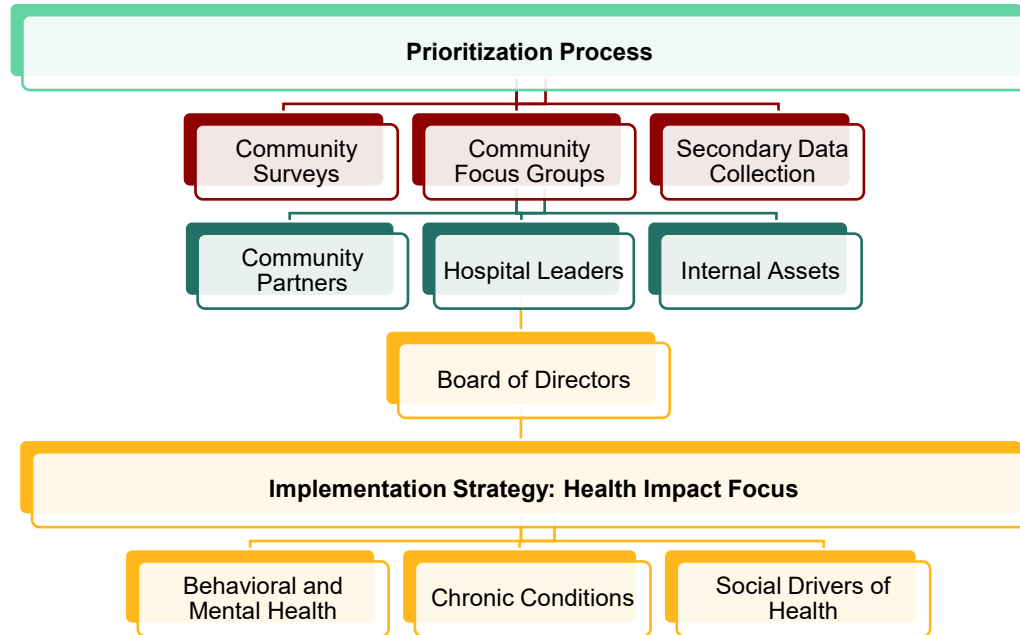



**Joint Community Health Needs Assessment Implementation Strategy for:
Sentara Princess Anne Hospital, Sentara Virginia Beach General Hospital,
Princess Anne Ambulatory Surgery Center, and Virginia Beach Ambulatory Surgery Center
Adoption Date: October 21, 2025 | Start Date: January 1, 2026**

This implementation strategy identifies the actions that the hospitals and surgery centers are jointly undertaking to address the health problems identified in the community health needs assessment, consistent with the requirements described in section 501(r)(3) of the Internal Revenue Code per the Patient Protection and Affordable Care Act. The actions within this Implementation Strategy are for both of the hospitals and the surgery centers and are guided by the hospitals mission and goals. Both hospitals and the surgery centers define their communities to be identical. The hospitals and surgery centers reserves the right to amend this Implementation Strategy as circumstances warrant. For example, certain needs may become more pronounced and require enhancements to the described strategic initiatives.




Sentara Health system-wide focus

Improve Behavioral Health and Mental Well-Being



Improve Chronic Conditions and Avoidable Health Outcomes



Address and Invest in Social Drivers of Health



	Identified Need	Population at Risk	Existing Community Asset	Potential Partner
Priority Area: Improve Behavioral Health and Mental Well-Being				
Goal: Enhance education to improve the mental and emotional well-being of all living in the community.	Survey results, collected data, and focus groups.	Aging, low income, youth	Social media, Community Education Team, Church Programs, Community Health Fairs	NAMI, PiN Ministry, Western Bayside Community, Meals on Wheels, Seniors of Southeastern Va, SPCA,
Strategy: Support education efforts to improve community knowledge regarding mental health, substance use, social isolation, and stress management.				
Objective: Provide community education materials including mental health resources.				
Priority Area: Improve Chronic Conditions and Avoidable Health Outcomes				
Goal: Reduce the impact of chronic conditions and chronic diseases on morbidity and mortality.	Survey results, collected data, and focus groups.	Low income, aging, chronic condition population	Social media, Community Education Team, Community Health Fairs, Church Programs, Diabetes Prevention Program,	Western Bayside Community, Virginia Beach Health District, Greater AME Church, PNA VA, Better Breathers
Strategy: Increase access to chronic disease education, availability of health education resources, and disease management education.				
Objective: Increase partners with organizations for community health screenings.				
Priority Area: Address and Invest in the Social Drivers of Health				
Goal: Develop and implement collective impact strategies to align healthcare providers and community-based organizations to address social and economic issues which impact health.	Survey results, collected data, and focus groups.	Aging, low income, disabled, unhoused population, uninsured	Social media, Community Education Team, Integrated Care Managers, Church Programs, Community Health Fairs	PiN Ministry, Navy Exchange, Western Bayside Community, Meals on Wheels, Seniors of Southeastern Va, SPCA, Food Bank,
Strategy: Support various approaches to working with community organizations.				
Objective: Enhance partnerships and support across the health system and community.				