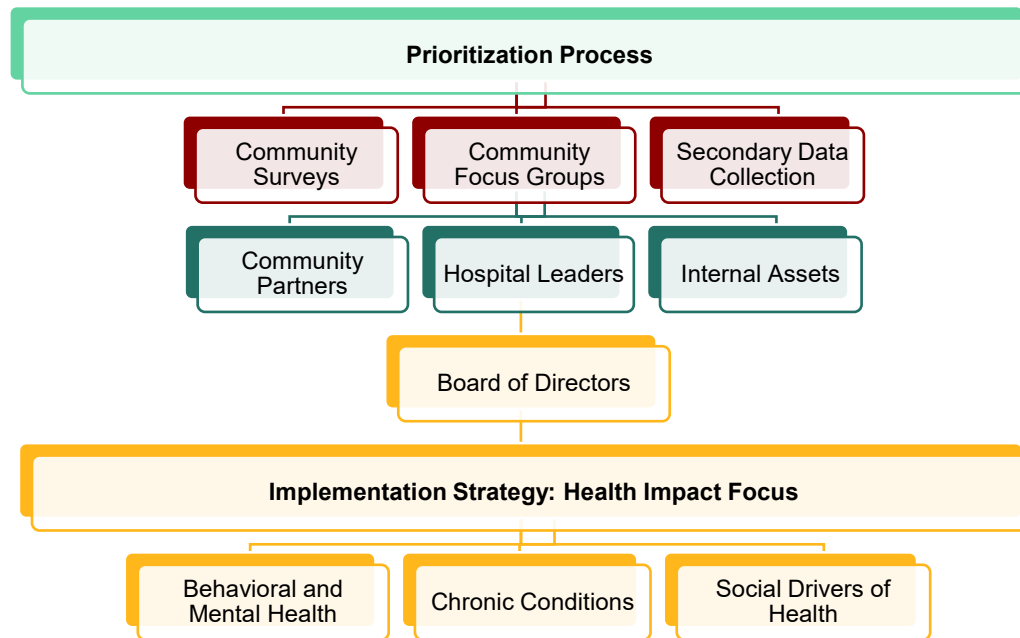


**Joint Community Health Needs Assessment Implementation Strategy for:
Sentara Albemarle Medical Center**


Adoption Date: September 30, 2025 | Start Date: January 1, 2026

This implementation strategy identifies the actions that the hospital is undertaking to address the health problems identified in the community health needs assessment, consistent with the requirements described in section 501(r)(3) of the Internal Revenue Code per the Patient Protection and Affordable Care Act. The actions within this Implementation Strategy are for the hospital and are guided by the hospital's mission and goals. The hospital reserves the right to amend this Implementation Strategy as circumstances warrant. For example, certain needs may become more pronounced and require enhancements to the described strategic initiatives.




Sentara Health system-wide focus

Improve Behavioral Health and Mental Well-Being



Improve Chronic Conditions and Avoidable Health Outcomes



Address and Invest in Social Drivers of Health



Implementation Plan	From CHNA Research		From Asset Mapping	
	Identified Need	Population at Risk	Existing Community Asset	Potential Partner
Priority Area: Improve Behavioral Health and Mental Well-Being				
Goal: Enhance education to improve the mental and emotional well-being of all living in the community.	Survey results, collected data, and focus groups.	Aging, low income, rural	Social media, Community Education Team, Faith Based Programs, Community Health Fairs	Beloved Haven, Trillium, Kids First, Albemarle Hopeline, Albemarle Regional Health Services, Interfaith Community Outreach, Boys and Girls Club of the Albemarle, City of Elizabeth City
Strategy: Support education efforts to improve community knowledge regarding mental health issues, community violence, and substance use.				
Objective: Provide community education materials including mental health resources, trauma informed care, stress management education.				
Priority Area: Improve Chronic Conditions and Avoidable Health Outcomes				
Goal: To improve the impact of chronic conditions, diseases and avoidable health outcomes.	Survey results, collected data, and focus groups.	Low income, chronic condition population, rural	Social media, Community Education Team, Community Health Fairs, Faith Based Programs, Mammovan	YMCA, Albemarle Hospital Foundation /Health Net, Albemarle Commission Area on Aging, Albemarle Regional Health Services, Pasquotank Senior Center
Strategy: Increase access to chronic disease management education and early detection.				
Objective: To provide community education, prevention, and screenings for chronic diseases.				
Priority Area: Address and Invest in the Social Drivers of Health				
Goal: Develop and implement collective impact strategies to align healthcare providers and community-based organizations to address social and economic issues which impact health.	Survey results, collected data, and focus groups.	Aging, low income, disabled, rural, unhoused population, uninsured	Social media, Community Education Team, Integrated Care Managers, Faith Based Programs, Community Health Fairs	Villages of NC, United Way, Interfaith Community Outreach, Albemarle Commission Area on Aging, Food Banks, Boys and Girls Club of the Albemarle, The Salvation Army, Stable Housing Improvement Plan (SHIP), Elizabeth Habitat for Humanity
Strategy: Increase awareness, access and availability of SDOH resources and referrals for community members.				
Objective: To provide community resources, and strategies to address SDOH.				