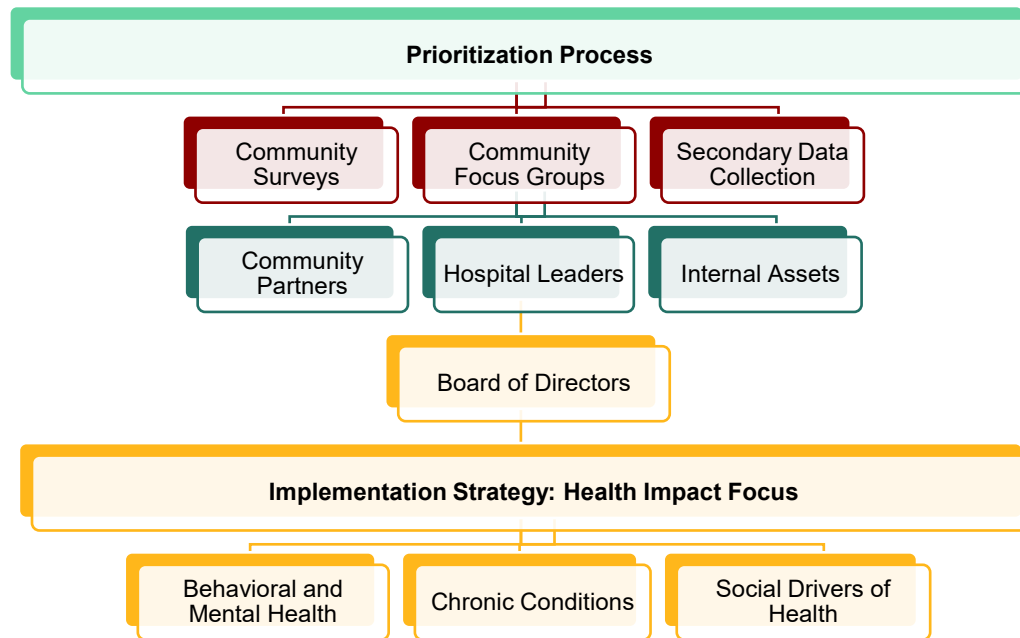



**Joint Community Health Needs Assessment Implementation Strategy for:  
Sentara Martha Jefferson Hospital and Sentara Martha Jefferson Outpatient Surgery Center  
Adoption Date: October 14, 2025 | Start Date: January 1, 2026**

This implementation strategy identifies the actions that the hospital and surgery center are jointly undertaking to address the health problems identified in the community health needs assessment, consistent with the requirements described in section 501(r)(3) of the Internal Revenue Code per the Patient Protection and Affordable Care Act. The actions within this Implementation Strategy are for both the hospital and the surgery center and are guided by the hospitals mission and goals. Both the hospital and the surgery center define their communities to be identical. The hospital and surgery center reserves the right to amend this Implementation Strategy as circumstances warrant. For example, certain needs may become more pronounced and require enhancements to the described strategic initiatives.




**Sentara Health system-wide focus**

**Improve Healthcare Access**



**Improve Chronic Conditions and Avoidable Health Outcomes**



**Address and Invest in Social Determinants of Health**



\*Sentara Martha Jefferson Hospital (SMJH) and Sentara Martha Jefferson Outpatient Surgery Center (SMJOSC) reviewed the MAPP2Health recommendations and developed strategies and programs specific to the hospital and surgery center. SMJH and SMJOSC will continue to support the Blue Ridge Health District efforts related to the MAPP2 Health recommendations.

Implementation Plan	From CHNA Research		From Asset Mapping	
	Identified Need	Population at Risk	Existing Community Asset	Potential Partner
<b>Priority Area: Improve Healthcare Access</b>				
<b>Goal:</b> Increase ability to get to care, afford care, and receive timely care.	Survey results, collected data, and focus groups.	Aging, low income	Social media, Community Education Team, Church Programs, Community Health Fairs	Free clinics, UVA health, Blue Ridge Health District,
<b>Strategy:</b> Support education efforts to improve community knowledge regarding access.				
<b>Objective:</b> Build a bridge between immediate health needs and broader social factors.				
<b>Priority Area: Improve Chronic Conditions and Avoidable Health Outcomes</b>				
<b>Goal:</b> Reduce the impact of chronic conditions, including behavioral health and chronic diseases, on morbidity and mortality.	Survey results, collected data, and focus groups.	Low income, chronic condition population	Social media, Community Education Team, Community Health Fairs, Church Programs	Free clinics, Blue Ridge Health District, Region 10, The Women's Initiative,
<b>Strategy:</b> Increase access to behavioral health and chronic disease education, availability of health education resources, mental health and disease management education.				
<b>Objective:</b> Increase partners with organizations for community screenings and resources.				
<b>Priority Area: Address and Invest in the Social Determinants of Health</b>				
<b>Goal:</b> Develop and implement collective impact strategies to align healthcare providers and community-based organizations to address social and economic issues which impact health.	Survey results, collected data, and focus groups.	Aging, low income, disabled, unhoused population, uninsured	Social media, Community Education Team, Integrated Care Managers, Church Programs, Community Health Fairs	Blue Ridge Area Food Bank,
<b>Strategy:</b> Support various approaches to working with community organizations.				
<b>Objective:</b> Enhance partnerships and support across the health system and community.				