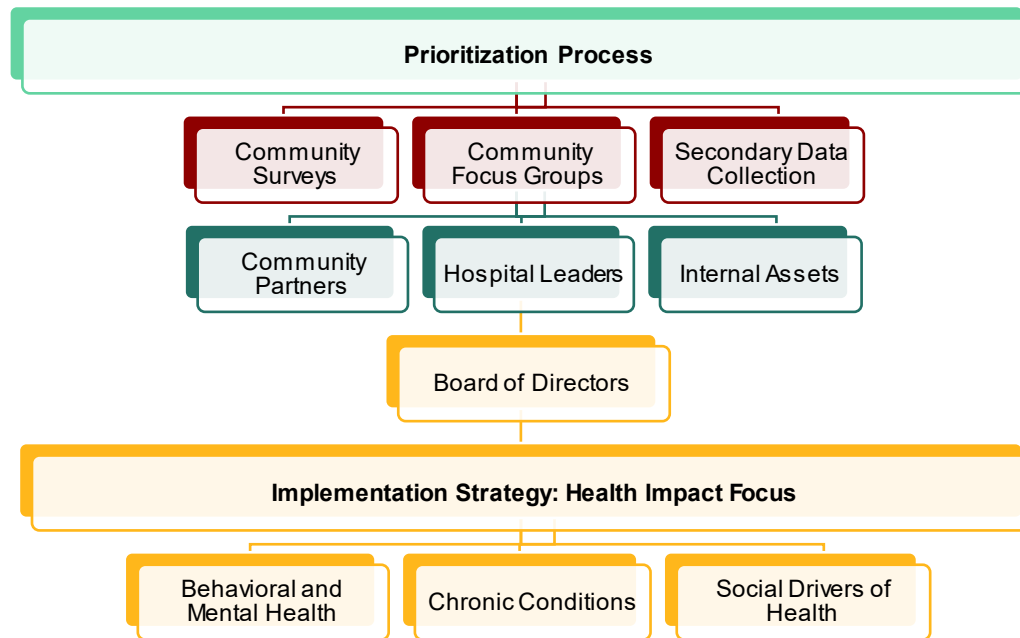


**Joint Community Health Needs Assessment Implementation Strategy for:
Sentara Northern Virginia Medical Center (SNVMC),**

Lake Ridge Ambulatory Surgery Center and Northern Virginia Heart and Vascular Center, LLC.


Potomac Hospital Corporation of Prince William (d/b/a SNVMC) BOD Adoption Date: September 4, 2025 | Start Date: January 1, 2026

This implementation strategy identifies the actions that the hospital and surgery center are jointly undertaking to address the health problems identified in the community health needs assessment, consistent with the requirements described in section 501(r)(3) of the Internal Revenue Code per the Patient Protection and Affordable Care Act. The actions within this Implementation Strategy are for both the hospital and the surgery center and are guided by the hospital's mission and goals. Both the hospital and the surgery center define their communities to be identical. The hospital and surgery center reserves the right to amend this Implementation Strategy as circumstances warrant. For example, certain needs may become more pronounced and require enhancements to the described strategic initiatives.




Sentara Health system-wide focus

Improve Behavioral Health and Mental Well-Being



Improve Chronic Conditions and Avoidable Health Outcomes



Address and Invest in Social Drivers of Health



Implementation Plan	From CHNA Research		From Asset Mapping	
	Identified Need	Population at Risk	Existing Community Asset	Potential Partner
Priority Area: Improve Behavioral Health and Mental Well-Being				
Goal: Improve the mental and emotional well-being of all living in the service area.	Survey results, collected data, and focus groups.	Aging, low income	Social media, Community Education Team, Church Programs, Community Health Fairs	LGBT Life Center, National Alliance on Mental Health (NAMI), Senior Services of Southeastern Virginia
Strategy: Support education efforts to improve community knowledge regarding mental health issues and provide stress management education.				
Objective: Provide community education materials including mental health resource packets and stress management education.				
Priority Area: Improve Chronic Conditions and Avoidable Health Outcomes				
Goal: Reduce the impact of chronic conditions and chronic diseases on morbidity and mortality.	Survey results, collected data, and focus groups.	Low income, chronic condition population	Social media, Community Education Team, Community Health Fairs, Church Programs	Chesapeake Care Clinic, YWCA South Hampton Roads, Hampton Roads Diabetes Prevention Program
Strategy: Increase access to chronic disease education, availability of health education resources, and disease management education.				
Objective: Increase partners with organizations for community health screenings.				
Priority Area: Address and Invest in the Social Drivers of Health				
Goal: Develop and implement collective impact strategies to align healthcare providers and community-based organizations to address social and economic issues which impact health.	Survey results, collected data, and focus groups.	Aging, low income, disabled, unhoused population, uninsured	Social media, Community Education Team, Integrated Care Managers, Church Programs, Community Health Fairs	Food Banks, Salvation Army, Transitions Family Violence Services
Strategy: Establish new approaches to working with community organizations – including joint advocacy, better systems for integrated care and referrals and collective impact models.				
Objective: Enhance partnerships and support across the health system and community.				