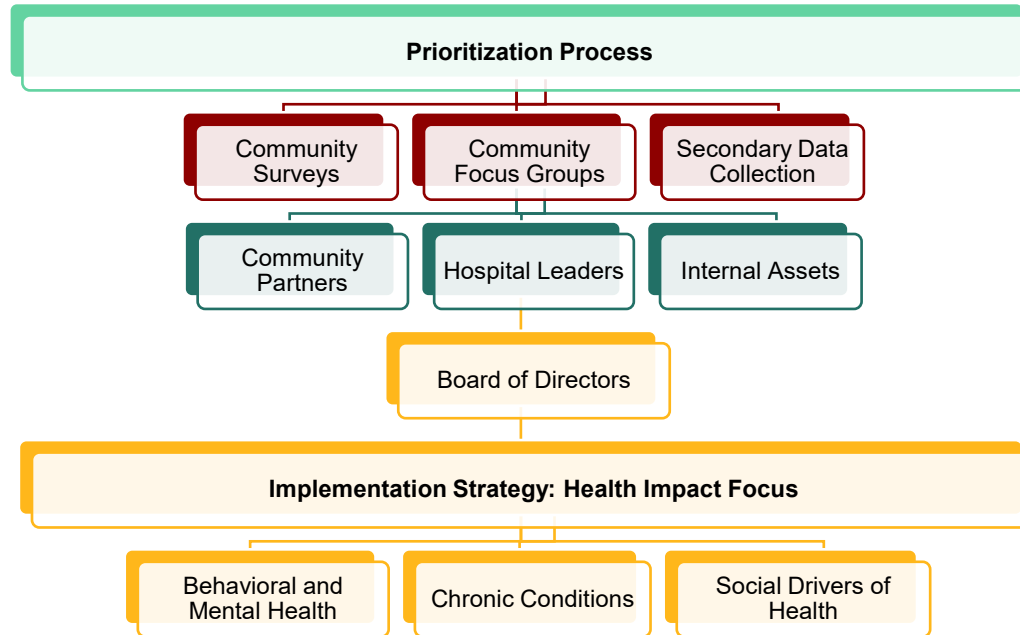



**Joint Community Health Needs Assessment Implementation Strategy for:
Sentara Norfolk General Hospital (SNGH) and Hospital for Extended Recovery (HER)
Adoption Date: October 21, 2025 | Start Date: January 1, 2026**

This implementation strategy identifies the actions that the hospital and acute care hospital are jointly undertaking to address the health problems identified in the community health needs assessment, consistent with the requirements described in section 501(r)(3) of the Internal Revenue Code per the Patient Protection and Affordable Care Act. The actions within this Implementation Strategy are for both SNGH and HER and guided by SNGH mission and goals. Both SNGH and HER define their communities to be identical. The hospital and the acute care hospital reserves the right to amend this Implementation Strategy as circumstances warrant. For example, certain needs may become more pronounced and require enhancements to the described strategic initiatives.




Sentara Health system-wide focus

Improve Behavioral Health and Mental Well-Being



Improve Chronic Conditions and Avoidable Health Outcomes



Address and Invest in Social Drivers of Health



Implementation Plan	From CHNA Research		From Asset Mapping	
	Identified Need	Population at Risk	Existing Community Asset*	Potential Partner
Priority Area: Improve Behavioral Health and Mental Well-Being				
<p>Goal: Improve the mental and emotional well-being of all living in the community.</p> <p>Strategy: Support education efforts to improve community knowledge regarding mental health issues, including community violence and substance, and provide stress management education.</p> <p>Objective: Provide community education materials including mental health resources, trauma informed care and stress management education.</p>	Survey results, focus groups, Emergency Department data	Youth, adults, low-income, uninsured, underinsured	Social Media Sentara Healthcare Behavioral Health Programs Advocacy & Outreach	Norfolk State University, Senior Services of Southeastern Virginia
Priority Area: Improve Chronic Conditions and Avoidable Health Outcomes				
<p>Goal: To improve the impact of chronic conditions, diseases, and avoidable health outcomes.</p> <p>Strategy: Increase access to disease management education and early detection.</p> <p>Objective: To provide community education, prevention, and screenings for chronic conditions and diseases.</p>	Survey results, focus Groups, data collection	Aging, low-income, uninsured, underinsured	Social Media Community Education Team Health Fairs	YMCA
Priority Area: Address and Invest in the Social Drivers of Health				
<p>Goal: Develop and implement collective impact strategies to address social and economic issues that impact health.</p> <p>Strategy: Increase awareness, access, and availability of SDOH resources and referrals for community members.</p> <p>Objective: To provide community education, resources, and strategies to address Social Drivers of Health.</p>	Survey results, focus groups, data collection	Low income, uninsured, underinsured, unhoused, at-risk	Social Media Community Education Team Health Fairs	PIN Ministries The Union Mission Ministries Urban League of Hampton Roads