

SENTARA REFERENCE LAB SOLUTIONS

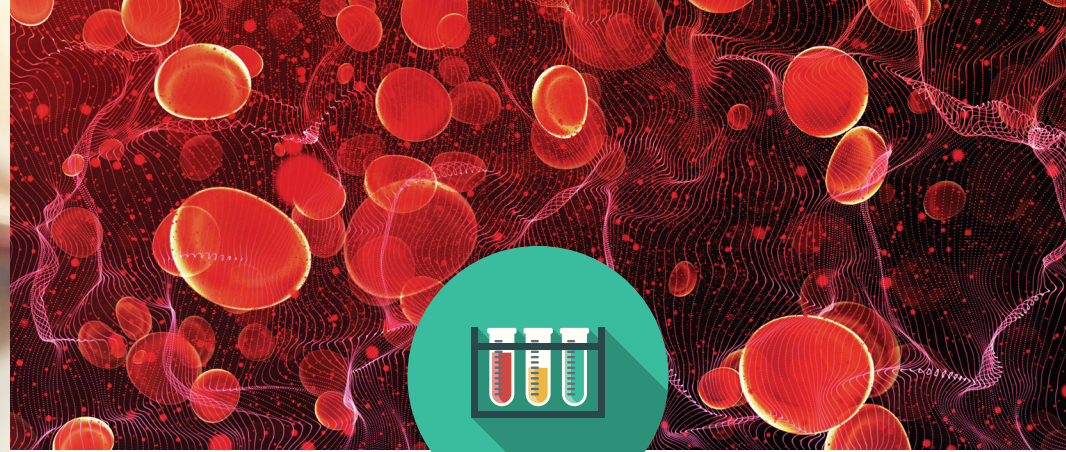


**DISCOVER BETTER**

**Comprehensive testing solutions  
with accurate, timely, quality results from  
your community reference lab of choice.**

[sentaralab.com](https://sentaralab.com)





# DISCOVER BETTER

Discover better diagnostic options for local testing with Sentara Reference Lab Solutions. As part of the community, our unparalleled commitment to you keeps us at the forefront of advancements in laboratory technologies allowing us to deliver the best results to your patients.



**In-Network**



**Competitive Fee Schedule**



**Managed Care**



**Interface Connectivity with several EMRs**



**In-Office Phlebotomy**



**American Society of Clinical Pathology (ASCP)  
Test Utilization Champions**

**CAP, AABB and DNV accredited**

# WHY CHOOSE SENTARA REFERENCE LAB SOLUTIONS?

## Single Source Provider

We are in-network for most insurance and managed care programs. We are also the exclusive lab for Sentara Connection, a Clinical Integrated Network. We offer on-site Anatomic Pathology Services including Surgical Pathology and Cytopathology (gynecological and non-gynecological).

## Quality

Our laboratory is accredited by the College of American Pathologists. Our team consists of Board Certified Pathologists, Certified Laboratory Scientists, and Technicians.

## Our Services

We are proud to provide a continuum of care with same lab testing for in-patient, outpatient, outreach, behavioral health and nursing homes. With dedicated service representatives and local customer service, we provide reliable counter services and one on one consultations with our Pathology Department.

Sentara Laboratory Services (SLS) has 900+ team members across 12 hospitals and five free standing EDs, with programs overseeing outreach. Currently offering 50+ patient access points. SLS provides cutting edge laboratory diagnostic testing for inpatient, ED, ambulatory, and the community (outreach). Rapid test menu growth consisting of innovative molecular, esoteric, and advanced automated technologies.



# INSURANCES

## Virginia

Contract	Product
Aetna Coventry	HMO/PPO/POS <i>Note: Nonparticipating: Aetna/Coventry-Premier Care Network, CVS Health, Medicare Advantage, Aetna Better Health HMO SNP and Cardinal Care, Coventry W/Comp</i>
Amerihealth Caritas NC	NC Medicaid
Anthem BCBS	All PPO/Indemnity
Anthem BCBS	All FEP
Anthem BCBS	Blue Connection/HPN (High Performance Network)
Anthem BCBS	Medicare Advantage/MediBlue (PPO) <i>Note: Nonparticipating: HMO-Health keepers (also plus Cardinal care) and Pathways X (exchange), CME transplant</i>
BCBS of NC	Health Blue/NC Medicaid, Medicare Advantage/MediBlue (PPO/HMO/DSNP))
Carolina Complete Health	NC Medicaid - SAMC only
Care First BCBS	All
Cigna -Connect	Exchange <i>Note: Nonparticipating Surfkit product, HMO/PPO products, lifesource (transplant)</i>
CHAMPVA	
Humana	HMO, PPO products/DSNP
Humana ChoiceCare Network	
Johns Hopkins Healthcare	
Magellan of Virginia -Behavioral Health	
MedCost	<i>Note: Nonparticipating: Med Cost VA Auto Liability, Worker Comp, and Link (wrap network)</i>
Multiplan	Wrap Network <i>Note: Nonparticipating: Primary coverage</i>
Optima Health	Community Complete - DSNP, Medicare Advantage, HMO, PPO, FIT (Exchange)
Optima Community Care	Cardinal Care
Piedmont Community Health	
Tricare	
United Healthcare	all products <i>Note: Nonparticipating: Medicare solutions/AARP compass SNVMC only</i>
United Healthcare	
United Community Plan	
United Community Plan -VA Medicaid	Cardinal Care <i>Note: Nonparticipating: United Community Plan NC Medicaid</i>
VA Community Care Network	VA CCN -Optum/UHC
Virginia Premier	Advantage Elite - HMO SNP
Virginia Premier	cardinal care
Wellcare of NC -NC Medicaid	

*list is not all inclusive and subject to further changes*

# INSURANCES

## North Carolina

Contract	Product
Aetna	HMO/PPO
Medcost of Virginia	All payers including Ultra
Optima Health	HMO/PPO
UnitedHealthcare	HMO/PPO
Humana	PPO, PFFS, HMO
Optima Health	HMO, DSNP
UnitedHealthcare	DSNP ONLY
Virginia Premier	HMO, DSNP
John Hopkins Healthcare (US Family Health Plan)	
Humana Military (TRICARE)	
AmeriHealth Caritas of NC	NC Medicaid
BCBS of NC HealthyBlue	HealthyBlue (NC Medicaid)
Optima Family Care	Medallion / FAMIS / CCC+
Virginia Premier	Medallion / FAMIS / CCC+
WellCare of NC	NC Medicaid

*list is not all inclusive and subject to further changes*



# COLLECTION LOCATIONS

Sentara Reference Lab Solutions offers clients and their patients the convenience of Patient Service Centers and draw sites located in Hampton Roads, Blue Ridge, Northern Virginia, and Eastern North Carolina. Patients can go to any of the following locations on a walk-in basis for quick, friendly, quality lab services.

## CHESAPEAKE

### †Sentara Greenbrier HealthPlex

713 Volvo Parkway  
Chesapeake, VA 23320  
(757) 282-4000  
Mon.–Fri. 7am– 5:30pm; Sat. 8am–Noon

Quantiferon TB Gold Testing

*\*Limited to participating insurances only*  
No Thursday Collection

## ELIZABETH CITY

### †Sentara Albemarle Medical Center

1144 N. Road Street  
Elizabeth City, NC 27909  
(252) 384-4452  
Mon.–Fri. 7am– 5pm; Sat. 8am–Noon

Quantiferon TB Gold Testing

*\*Limited to participating insurances only*  
No Thursday Collection

## NORFOLK

### †Sentara Brock Cancer Center

6251 E. Virginia Beach Blvd.  
Norfolk, VA 23502  
(888) 220-2214  
Mon.–Fri. 7:30am– 4pm

Quantiferon TB Gold Testing

*\*Limited to participating insurances only*  
No Thursday Collection

### †Sentara Leigh Hospital

830 Kempsville Road  
Norfolk, VA 23502  
(757) 261-8960  
Mon.–Fri. 6:30am– 5pm; Sat. 8am–Noon

Quantiferon TB Gold Testing

*\*Limited to participating insurances only*  
No Thursday Collection

### †Sentara Norfolk General Hospital

River Pavilion & Kaufman 600 Gresham Drive  
Norfolk, VA 23507

(757) 388-3962

River Pavilion:

Mon.–Fri. 6:30am– 3pm

Kaufman: Sat. 8am–Noon

Quantiferon TB Gold Testing

*\*Limited to participating insurances only*  
No Thursday Collection

## PENINSULA

### †Sentara CarePlex Hospital

3000 Coliseum Drive  
Hampton, VA 23666

(757) 736-1901

Mon.–Fri. 6:30am– 6pm; Sat. 8am–Noon

Quantiferon TB Gold Testing

*\*Limited to participating insurances only*  
No Thursday Collection

### †Sentara Port Warwick II

1031 Loftis Blvd.  
Newport News, VA 23606

(757) 736-9697

Mon.–Fri. 7am– 4pm

Quantiferon TB Gold Testing

*\*Limited to participating insurances only*  
No Thursday Collection

### Sentara Gloucester Med Arts

5659 Parkway Drive Suite 100  
Gloucester, VA 23061

(804) 210-1000

Mon.–Fri. 8am– 5pm

## SUFFOLK

### Sentara St. Luke's

20209 Sentara Way, Suite 100  
Carrollton, VA 23314

(757) 542-1125

Mon.–Fri. 7:30am–4:30pm

# COLLECTION LOCATIONS

## †Sentara Obici Hospital

2800 Godwin Blvd.  
Suffolk, VA 23435  
(757) 934-4725  
Mon.–Fri. 7am– 5pm; Sat. 8am–Noon

Quantiferon TB Gold Testing  
*\*Limited to participating insurances only*  
No Thursday Collection

## †Sentara BelleHarbour

3920 A Bridge Road  
Suffolk, VA 23435  
(757) 983-0016  
Mon.–Fri. 7am– 5pm; Sat. 8am–Noon

Quantiferon TB Gold Testing  
*\*Limited to participating insurances only*  
No Thursday Collection

## VIRGINIA BEACH

### †Sentara Independence

800 Independence Blvd.  
Virginia Beach, VA 23455  
(757) 363-6500  
Mon.–Fri. 7am– 5pm; Sat. 8am–Noon

Quantiferon TB Gold Testing  
*\*Limited to participating insurances only*  
No Thursday Collection

## †Sentara Virginia Beach General Hospital

1060 First Colonial Road  
Virginia Beach, VA 23454  
(757) 395-8840  
Mon.–Fri. 6:30am– 6pm; Sat. 8am–Noon

Quantiferon TB Gold Testing  
*\*Limited to participating insurances only*  
No Thursday Collection

## †Sentara Princess Anne Hospital

1975 Glenn Mitchell Drive Suite 100  
Virginia Beach, VA 23456  
(757) 507-0078  
Mon.–Fri. 7am– 5:30pm; Sat. 8am–Noon

Quantiferon TB Gold Testing  
*\*Limited to participating insurances only*  
No Thursday Collection

## WILLIAMSBURG

### †Sentara Williamsburg Regional Medical Center

100 Sentara Way  
Williamsburg, VA 23188  
(757) 984-7970  
Mon.–Fri. 7am– 5:30pm; Sat. 8am–Noon

Quantiferon TB Gold Testing  
*\*Limited to participating insurances only*  
No Thursday Collection

\*Quantiferon TB Gold Testing: non-participating insurances include Healthkeepers.

Consult insurance plan for available collection sites.

All times are subject to change. Closed holidays.

PLEASE NOTE: Not all lab locations offer all services.

†Preadmission testing available at these locations.

To learn more call 800-822-0468 or 757-388-3621.

# COLLECTION LOCATIONS

## BRIDGEWATER

### Bridgewater Health Center

100 Health Center Drive  
Bridgewater, VA 22812  
(540) 515-9109  
Mon.–Fri. 8am– 4:30pm

Quantiferon TB Gold Testing  
*\* Limited to participating insurances only*  
No Thursday Collection

## ELKTON

### Sentara RMH East Rockingham Health Center

13737 Spotswood Trail  
Elkton, VA 22827  
(540) 713-4100  
Mon.–Fri. 7:30am– 4pm

Quantiferon TB Gold Testing  
*\* Limited to participating insurances only*  
No Thursday Collection

## HARRISONBURG

### †Sentara RMH Medical Center

2010 Health Campus Drive  
Harrisonburg, VA 22801  
(540) 689-6600  
Mon.–Fri. 6am– 6pm; Sat. 7am–Noon

Quantiferon TB Gold Testing  
*\* Limited to participating insurances only*  
No Thursday Collection

### Sentara RMH East Market Street Health Center

1790-64B East Market St.  
Harrisonburg, VA 22801  
(540) 564-5737  
Mon.–Fri. 7:30am– 4:30pm

## TIMBERVILLE

### Sentara RMH Timber Way Health Center

13892 Timber Way  
Broadway, VA 22815  
(540) 901-0899  
Mon.–Fri. 7:30am– 4pm

Quantiferon TB Gold Testing  
*\* Limited to participating insurances only*  
No Thursday Collection

## LAKE RIDGE

### †Sentara Lake Ridge

12825 Minnieville Road  
Lake Ridge, VA 22192  
(703) 523-9883  
Mon.–Fri. 7am– 3:30pm

Quantiferon TB Gold Testing  
*\* Limited to participating insurances only*  
No Thursday Collection

## WOODBIDGE

### †Sentara Northern Virginia Medical Center

2300 Opitz Blvd.  
Woodbridge, VA 22191  
(703) 523-0730  
Mon.–Fri. 7am– 4:30pm; Sat. 8am–Noon

Quantiferon TB Gold Testing  
*\* Limited to participating insurances only*  
No Thursday Collection

## CHARLOTTESVILLE

### †Sentara Martha Jefferson Hospital Outpatient Collection Center

Laboratory Specimen Collections  
2nd floor of hospital  
500 Martha Jefferson Drive  
Charlottesville, VA 22911  
(434) 654-8890  
Mon.–Fri. 7am– 5pm

Quantiferon TB Gold Testing  
*\* Limited to participating insurances only*  
No Thursday Collection

### †Sentara Martha Jefferson Outpatient Collection Center at Proffit Road

3263 Proffit Road  
Charlottesville, VA 22911  
(434) 654-4650  
Mon.–Fri. 8am– 4pm

Quantiferon TB Gold Testing  
*\* Limited to participating insurances only*  
No Thursday Collection

# COLLECTION LOCATIONS

## **Sentara Martha Jefferson Outpatient Care**

Center-Downtown  
920 East High Street  
Charlottesville, VA 22902  
Suite 003  
(434) 654-1980  
Mon.-Fri. 8am- 4:30pm

No pre-operative testing collections at this site.

## **SOUTH BOSTON**

### **†Sentara Halifax Regional Hospital**

#### **Central Testing**

2204 Wilborn Ave  
South Boston, VA 24592  
(434) 517-3100  
Mon.-Fri. 7:30am- 4pm

Quantiferon TB Gold Testing

*\* Limited to participating insurances only*

No Thursday Collection



\*Quantiferon TB Gold Testing: non-participating insurances include Healthkeepers.

Consult insurance plan for available collection sites.

All times are subject to change. Closed holidays.

PLEASE NOTE: Not all lab locations offer all services.

†Preadmission testing available at these locations.

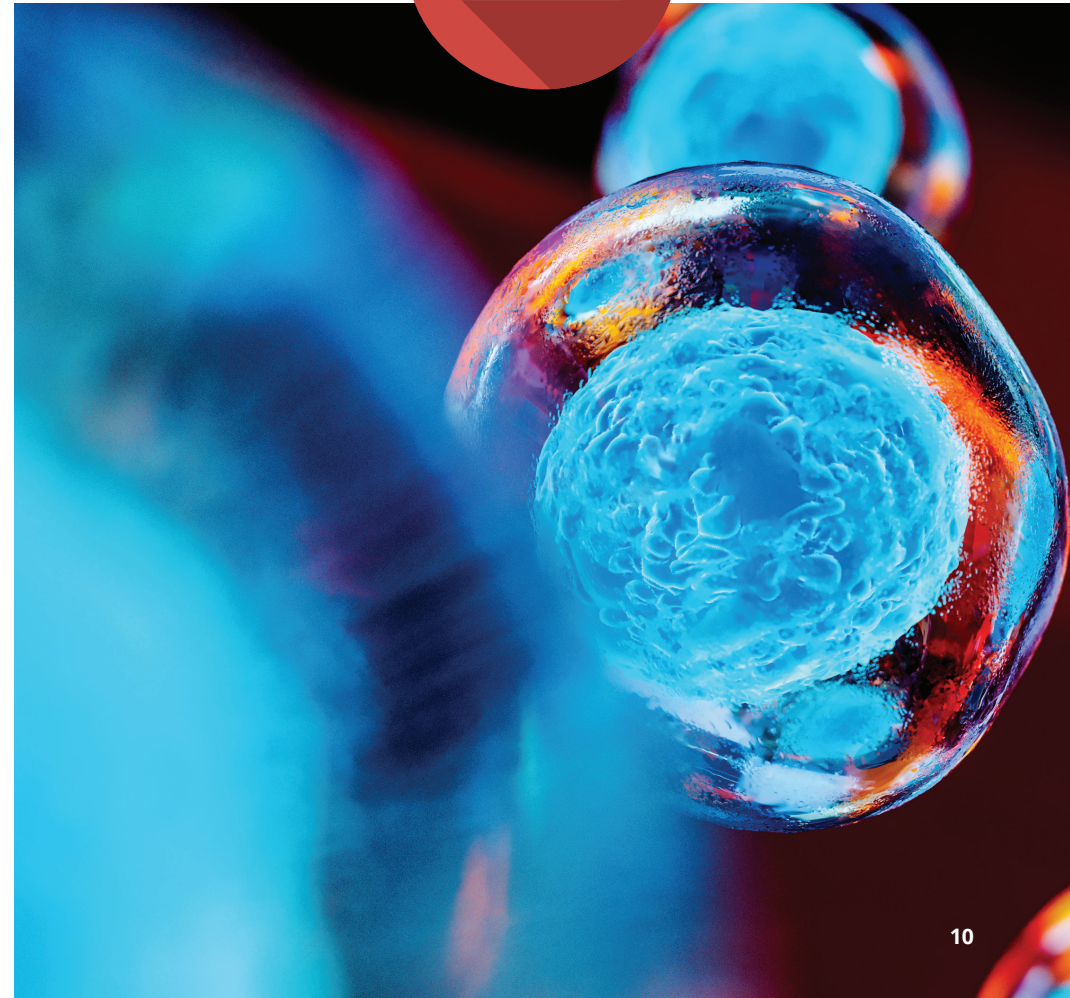
To learn more call 800-822-0468 or 757-388-3621.

# FOR MORE INFORMATION

For more information about our services,  
visit us online at **sentaralab.com**

Phone: **757.388.3621 | 1.800.822.0468**

Email: **labcustomersvcs@sentara.com**





[sentaralab.com](http://sentaralab.com)