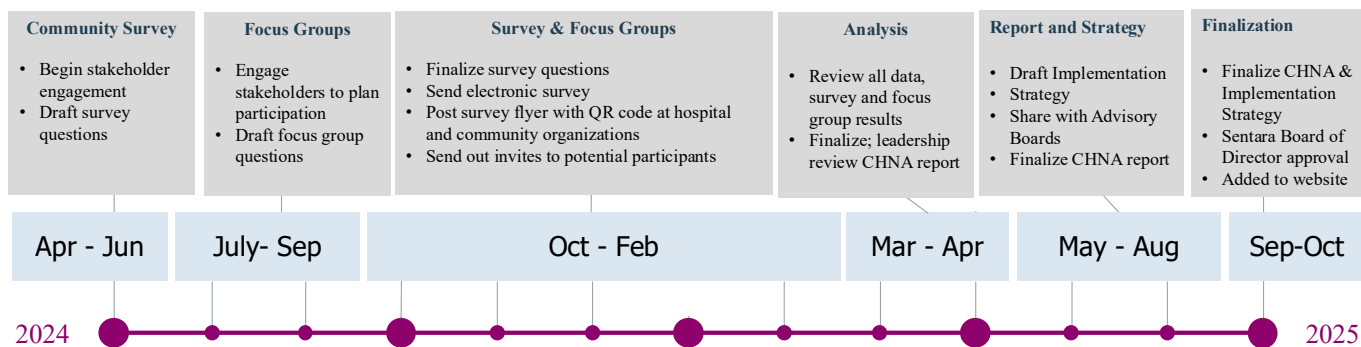


Appendices represent data and sources used in the Community Health Needs Assessment report.

2025 CHNA Process and Timeline



[Appendix A: Community Demographics](#)

Demographics include geography, population change, age, gender, ethnicity, language, education, employment, poverty, and insurance.

[Appendix B: Community Health Indicators](#)

Indicators include county health rankings (health outcomes and health factors), access to health services, mortality, hospitalizations, risk factors, COVID-19, maternal and infant, aging adults, cancer, behavioral health, violent crimes, and gun violence.

[Appendix C: Community Input](#)

This includes the survey questions, survey answers, focus group demographics, questions and brief summary of results.

[Community Responses](#)

[Stakeholder Responses](#)

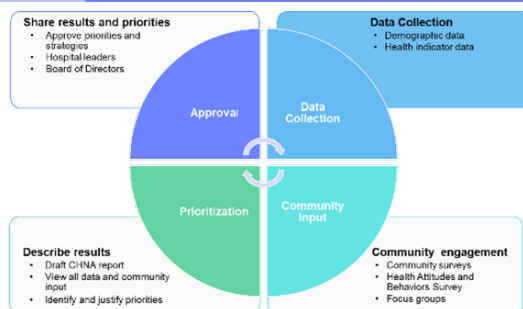
[Focus Groups](#)

[Appendix D: Prioritization Process](#)

Data Limitations

- The data presented represents a snapshot of the population, economic and leading health, and wellness issues in the service area.
- It includes primary data gathered from community surveys and secondary data from health and other sources.
- This information can be used as a guide for helping communities identify leading health issues in the service area.
- Other health issues, data and resources may be available that were not listed here that communities may wish to consider when establishing health priorities.

Appendix A: Demographics



Geography							
2024 Population Density per Square Mile							
	Virginia	Williamsburg City	Gloucester County	James City County	King and Queen County	New Kent County	York County
Population Density/Sq Mile	219	1,741	180	563	21	115	674

Source: Accessed March 13, 2025

A total of 236,243 people live in the 998.91 square mile report area defined for this assessment according to the U.S. Census Bureau American Community Survey 2019-23 5-year estimates. The population density for this area, estimated at 237 persons per square mile, is greater than the national average population density of 94 persons per square mile.

[Virginia's Plan For Well-Being](#), Virginia Community Health Improvement Data Portal. US Census Bureau, [American Community Survey](#). 2019-23.

Population Change								
2020-2040 Population Projections								
Demographics	Virginia	Total Service Area	Williamsburg City	Gloucester County	James City County	King and Queen County	New Kent County	York County
Population Estimates, 2023	8,715,698	242,364	15,847	40,057	82,654	6,720	26,134	70,952
Population, % change, 4/1/2020 to 07/1/2023	1.0%	4.6%	2.8%	3.5%	5.6%	1.7%	13.9%	1.3%
*Projected Population 2035	9,444,186	264,647	17,264	40,656	94,993	6,130	29,204	76,400
*Projected Population 2045	10,147,590	292,930	18,842	42,315	109,307	6,074	33,711	82,681
*Projected Population 2055	10,924,029	323,287	20,556	44,278	124,383	6,063	38,452	89,555
*Projected Population 2020-2035, %	8.3%	8.4%	8.2%	1.5%	13.0%	-9.6%	10.5%	7.1%
*Projected Population 2035-2045, %	6.9%	9.7%	8.4%	3.9%	13.1%	-0.9%	13.4%	7.6%
*Projected Population 2045-2055, %	7.1%	9.4%	8.3%	4.4%	12.1%	-0.2%	12.3%	7.7%

Sources: Accessed March 13, 2025

[United States Census Bureau: Quick Facts](#).

*Weldon Cooper Center for Public Services: [Virginia Population Projections. August 2023](#)

Green=increase

Red=decrease

Population by Sex at Birth								
Female	4,379,009	119,854	8,225	19,677	41,457	3,310	11,579	35,606
%	50.58%	50.73%	52.85%	50.16%	51.79%	49.58%	47.97	50.44%
Male	4,278,490	116,389	7,339	19,551	38,589	3,366	12,560	34,984
%	49.42%	49.27%	47.15%	49.84%	48.21%	52.42%	52.03%	49.56%

Sources: Accessed

[Virginia's Plan For Well-Being](#), Virginia Community Health Improvement Data Portal. Data Source: US Census Bureau, [American Community Survey](#). 2019-23.

Population by Age								
Demographics	Virginia	Total Service Area	Williamsburg City	Gloucester County	James City County	King and Queen County	New Kent County	York County
Age 0-4	5.72%	4.71%	2.27%	4.70%	4.84%	4.52%	4.52%	5.19%
Age 5-17	16.16%	15.43%	8.19%	15.34%	14.81%	13.30%	14.98%	18.15%
Age 18-24	9.29%	9.52%	40.73%	6.59%	6.92%	3.98%	6.66%	8.71%
Age 25-34	13.55%	10.69%	9.55%	11.24%	9.50%	10.89%	12.82%	11.24%
Age 35-44	13.45%	12.44%	7.32%	12.48%	11.49%	11.29%	13.14%	14.51%
Age 45-54	12.61%	11.83%	5.71%	12.72%	11.84%	14.74%	14.13%	11.62%
Age 55-64	12.94%	14.19%	9.10%	16.59%	14.24%	17.66%	15.05%	13.31%
Age 65+	16.29%	21.17%	17.13%	20.33%	26.36%	23.61%	18.71%	17.26%

Sources: Accessed March 13, 2025

[Virginia's Plan For Well-Being](#), Virginia Community Health Improvement Data Portal, US Census Bureau, **American Community Survey**, 2019-23.

The Aging Population: Growth Projections, 2023								
2030 Age 65-74	11.6%	14.7%	9.4%	16.3%	16.8%	15.7%	15.9%	12.2%
2030 Age 75-84	6.5%	9.5%	6.5%	9.0%	12.4%	10.0%	9.0%	7.2%
2030 Age 85+	2.1%	3.5%	2.1%	2.8%	5.2%	3.0%	2.2%	2.8%
2040 Age 65-74	8.9%	12.0%	8.1%	12.4%	14.9%	13.5%	13.1%	8.7%
2040 Age 75-84	7.3%	11.0%	7.1%	12.0%	13.3%	12.1%	9.4%	8.9%
2040 Age 85+	2.9%	2.3%	17.0%	4.0%	0.6%	4.5%	1.0%	0.4%
2050 Age 65-74	8.4%	11.6%	8.3%	12.2%	13.7%	13.4%	11.6%	9.3%
2050 Age 75-84	6.2%	8.9%	5.7%	9.4%	11.5%	10.1%	7.8%	6.3%
2050 Age 85+	3.5%	5.9%	2.6%	5.7%	7.8%	6.0%	3.9%	4.9%

Sources: Accessed February 1, 2025

[Weldon Cooper Center for Public Services: Virginia Population Projections, August 2023](#)

Racial Profile								
White	61.73%	74.32%	68.16%	84.04%	74.86%	66.76%	78.00%	69.12%
Black	18.75%	12.65%	15.24%	8.14%	12.81%	23.85%	13.40%	13.10%
Asian	6.86%	3.35%	6.96%	0.82%	2.61%	0.00%	1.10%	5.87%
Some Other Race	4.06%	1.59%	1.14%	1.59%	2.06%	2.79%	1.68%	1.56%
Multiple Races	8.23%	7.83%	8.26%	6.18%	7.62%	6.37%	5.17%	9.92%
Hispanic or Latino Population, Percent	10.73%	6.25%	8.01%	4.04%	6.91%	3.12%	3.57%	7.56%
Non-Hispanic Population, Percent	89.27%	93.75%	91.99%	95.96%	93.09%	96.88%	96.43%	92.44%
*Foreign Born Persons	12.6%	6.2%	10.4%	1.7%	7.2%	0.7%	3.8%	7.9%

Sources: Accessed: March 5, 2025

[Virginia's Plan For Well-Being](#), Virginia Community Health Improvement Data Portal. Data, US Census Bureau, **American Community Survey**, 2019-23.

*United States Census Bureau: [Quick Facts](#).

Spoken Languages, Population with Limited English Proficiency								
	Virginia	Total Service Area	Williamsburg City	Gloucester County	James City County	King and Queen County	New Kent County	York County
	6.14%	2.15%	2.82%	0.62%	2.12%	0.86%	1.95%	3.06%
Population with Limited English Proficiency, age 5+, by Ethnicity Alone								
Hispanic or Latino	29.98%	12.18%	20.82%	3.86%	13.29%	27.09%	27.69%	8.36%
Not Hispanic or Latino	3.38%	1.50%	1.23%	0.48%	1.33%	0.00%	1.01%	2.65%
Population with Limited English Proficiency, age 5+, by Race Alone								
White	2.00%	0.63%	1.08%	0.10%	0.69%	-	0.93%	0.76%
Asian	26.78%	25.25%	3.60%	47.23%	28.13%	No Data	15.79%	28.77%
Some Other Race	37.27%	21.14%	19.77%	8.37%	27.95%	29.78%	43.18%	5.87%
Multiple Race	13.75%	4.98%	16.93%	1.62%	3.20%	0.53%	4.10%	5.89%
Population, Age 5+, with Limited English Proficiency by Language Spoken at Home								
Spanish	3.0%	45.65%	296	75	820	55	338	616
Asian, Pacific Island	1.5%	33.0%	39	78	569	-	42	865
Sentara Language Line Services Requested at SWRMC								
*Spanish	-	84.5%	-	-	-	-	-	-
*Vietnamese	-	2.9%	-	-	-	-	-	-
*Russian	-	1.7%	-	-	-	-	-	-
Sources: March 5, 2025								
Virginia's Plan For Well-Being , Virginia Community Health Improvement Data Portal, US Census Bureau, American Community Survey , 2019-23.								
*Sentara Language Line Usage Report, January 2024-December 2024								
(-) no data available								
Other Demographics, 2019-2023								
Veterans								
Veterans	7.3%	10.7%	5.8%	10.4%	11.2%	6.7%	7.9%	12.8%
Persons Without Health Insurance, under age 65								
Persons without Insurance	7.6%	6.6%	5.8%	8.0%	6.0%	9.5%	7.5%	6.0%
Education, age 25+								
High School Graduate or Higher	91.3%	94.3%	93.1%	91.2%	95.2%	90.0%	94.6%	95.7%
Bachelor's Degree or Higher	41.5%	43.6%	48.5%	25.9%	50.2%	19.5%	35.5%	50.0%
Labor Force, age 16+								
Civilian Labor Force	63.7%	57.8%	49.3%	60.8%	54.7%	62.0%	63.8%	58.9%
Civilian Labor Force, Female	60.2%	53.8%	48.1%	56.3%	50.2%	56.3%	57.8%	56.1%
Median Household Income								
Median Household Income	\$90,974	-	\$70,206	\$83,689	\$107,046	\$72,851	\$120,125	\$108,326
Owner-occupied Housing	67.2%	-	52.6%	79.8%	78.8%	77.4%	92.1%	71.2%
Computer and Broadband Internet Access								
Households with Computer	94.8%	95.8%	97.4%	94.6%	97.0%	89.8%	94.6%	95.7%
Households with Broadband Internet	89.9%	91.7%	89.7%	88.8%	94.4%	73.6%	89.0%	93.5%
Sources: Accessed March 13, 2025								
United States Census Bureau: Quick Facts .								

Persons Living with any Disability

	Virginia	Total Service Area	Williamsburg City	Gloucester County	James City County	King and Queen County	New Kent County	York County
Persons with Disability	12.25%	13.66%	9.68%	17.23%	14.36%	16.34%	10.99%	12.35%
Population with Any Disability by Race/Ethnicity Alone								
Hispanic or Latino	7.73%	9.62%	16.34%	6.19%	8.41%	10.58%	15.76%	9.15%
Not Hispanic or Latino	12.79%	13.92%	9.09%	17.67%	14.79%	16.53%	10.82%	12.58%
White	13.02%	14.06%	8.83%	17.59%	14.42%	17.55%	11.56%	12.96%
Black	13.98%	15.24%	14.72%	14.16%	19.35%	15.70%	9.88%	12.70%
American Indian or Alaska Native	14.81%	24.31%	-	36.59%	40.00%	12.50%	5.06%	48.55%
Asian	6.89%	7.82%	2.77%	9.69%	6.63%	-	-	10.19%
Some Other Race	7.67%	9.12%	-	9.21%	5.25%	10.75%	25.81%	9.63%
Multiple Race	9.18%	10.59%	14.81%	17.64%	10.34%	8.71%	2.66%	8.98%
Population with Any Disability-by-Disability Status								
Hearing	3.37%	4.41%	3.08%	5.34%	4.91%	5.72%	2.72%	4.04%
Vision	2.26%	2.41%	1.90%	3.34%	2.51%	3.52%	2.09%	1.89%
Cognitive	4.96%	5.04%	3.80%	7.62%	5.15%	4.57%	3.03%	4.46%
Ambulatory	6.17%	6.76%	3.67%	9.76%	6.97%	7.83%	5.65%	5.76%
Self-care	2.41%	2.49%	1.05%	4.07%	2.61%	3.66%	1.87%	1.87%
Independent Living	5.40%	5.42%	1.72%	8.32%	5.57%	5.67%	5.35%	4.45%

Sources: March 13, 2025

Virginia's Plan For Well-Being, US Census Bureau, American Community Survey. 2019-23

Poverty

Poverty, all ages	867,052	17,871	2,058	3,153	5,859	854	1,420	4,527
Poverty %	10.2%	7.6%	18.8%	7.9%	7.2%	12.7%	5.6%	6.5%
Poverty, under age 18	235,215	4,179	363	863	1,328	206	344	1,075
Poverty %	12.7%	8.8%	20.6%	11.0%	8.4%	18.4%	6.9%	6.7%

Sources: Accessed March 13, 2025

United States Census Bureau: [Small Area Income and Poverty Estimates \(SAIPE\), 2023](#)

Poverty Status by Race/Ethnicity

White	7.9%	5.2%	12.4%	6.0%	4.7%	11.0%	3.9%	4.1%
Black	16.4%	13.5%	21.8%	13.0%	13.1%	28.7%	14.6%	9.0%
Asian	6.8%	7.4%	35.0%	0.0%	3.8%	-	9.4%	8.5%
Two or more races	10.3%	9.5%	7.0%	10.7%	12.9%	41.4%	4.4%	5.4%
Hispanic or Latino	13.2%	10.6%	12.0%	0.9%	15.9%	70.2%	0.0%	7.0%

Sources: Accessed

United States Census Bureau: American Community Survey, 2023: [ACS 5-Year Estimates](#)

(-) no data available

Unemployment, population 16 years and over

Unemployed	191,415	4,369	494	651	1,286	172	343	1,423
Unemployed, percent	2.7%	4.0%	3.5%	2.0%	1.9%	3.1%	1.7%	2.5%

Sources: Accessed March 13, 2025

United States Census Bureau: American Community Survey, 2023: [ACS 5-Year Estimates](#)

Employment, population 16 years and over

	Virginia	Total Service Area	Williamsburg City	Gloucester County	James City County	King and Queen County	New Kent County	York County
In labor force	4,611,949	112,284	6,974	19,618	36,284	3,494	12,772	33,142
In labor force, percent	65.3%	57.7%	49.3%	60.8%	54.7%	62.0%	63.8%	58.9%
Females, age 16+	3,607,923	99,488	7,693	16,284	34,538	2,820	9,700	28,453
In labor force, female	2,200,847	54,392	3,699	9,228	17,497	1,588	5,603	16,777
In labor force, female, percent	61.0%	54.7%	48.1%	56.7%	50.7%	56.3%	57.8%	59.0%

Sources: Accessed March 13, 2025

United States Census Bureau: American Community Survey, 2023: [ACS 5-Year Estimates](#)

Education Attainment, population 25 years and over, 2019-2023

No High School Diploma	8.7%	5.66%	6.9%	8.8%	4.8%	10.0%	5.4%	4.3%
High School Only	23.9%	22.13%	16.9%	32.2%	18.9%	38.7%	28.4%	16.7%
Some College	18.2%	19.52%	19.3%	23.9%	17.9%	23.5%	20.7%	18.1%
Associate's Degree	7.80%	9.38%	8.5%	9.1%	8.3%	8.4%	10.1%	10.9%
Bachelor's Degree	23.3%	23.99%	26.6%	16.5%	25.9%	14.4%	24.9%	26.5%
Graduate or Professional Degree	18.2%	19.31%	22.3%	9.4%	24.3%	5.1%	10.6%	23.5%

Sources: Accessed: February 24, 2025

[Virginia's Plan For Well-Being](#), Virginia Community Health Improvement Data Portal. Data Source: US Census Bureau, [American Community Survey](#), 2019-23.

Government Programs

Medicaid and FAMIS (Below 138% FPL) Enrollment November 1, 2024

	Virginia	Total Service Area	Williamsburg City	Gloucester County	James City County	King and Queen County	New Kent County	York County
Medicaid/FAMIS Enrollment	1,994,822	30,870	2,748	8,461	11,121	-	-	8,540
Medicaid/FAMIS Percentage	22.9%	12.7%	17.3%	21.1%	13.5%	-	-	12.0%
65+ Enrolled in Medicaid/FAMIS Enrollment	91,312	1,130	108	370	305	-	-	347
65+ Enrolled in Medicaid/FAMIS Percentage	1.0%	0.5%	0.7%	0.9%	0.4%	-	-	0.5%
Children Enrolled in Medicaid/FAMIS	776,548	12,049	1,040	3,005	4,567	-	-	3,437
Children Enrolled in Medicaid/FAMIS Percentage	9.0%	5.0%	6.6%	7.5%	5.5%	-	-	4.8%

Sources: Accessed

[Virginia Medicaid](#), [Department of Medical Assistance Services \(DMAS\) Data](#)

Medicare Enrollment, 2022

65+ Medicare Percentage	65.40%	-	62.1%	61.5%	63.7%	72.4%	73.5%	52.7%
65+ Medicare and Medicaid Percentage	4.80%	-	-	3.8%	2.2%	4.2%	2.4%	2.6%

Sources: Accessed March 13, 2025

Centers for Medicare & Medicaid Services Data (cms.gov), [Mapping Medicare Disparities by Population](#)

Appendix B: Community Health Indicators

Length of Life (Average number of years a person can expect to live)								
	Virginia	Total Service Area	Williamsburg City	Gloucester County	James City County	King and Queen County	New Kent County	York County
Life expectancy	78.1	*80.02	76.6	76.6	82.0	73.3	74.6	81.1
Length of Life: African Americans								
Life expectancy	-		67.3	69.2	76.8	66.8	71.3	79.2
Length of Life: White								
Life expectancy	-		79.4	76.8	82.7	74.8	76.3	80.9
Sources: March 13, 2025								
2024 County Health Rankings & Roadmaps								
*Virginia's Plan For Well-Being, Virginia Community Health Improvement Data Portal. Centers for Disease Control and Prevention and the National Center for Health Statistics, U.S. Small-Area Life Expectancy Estimates Project . 2010-15.								
(-) data unavailable								
Access to Care								
Primary Care Physicians, 2021	6443	-	2	18	89	2	7	82
Primary Care Physician ratio, 2021	1340:1	-	7795:1	2171:1	898:1	3331:1	3414:1	865:1
Dentists, 2022	6535	-	-	14	91	-	6	38
Dentist ratio, 2022	1329:1	-	-	2821:1	892:1	-	4164:1	1877:1
Mental Health Providers, 2023	21124	-	7	83	333	-	31	78
Mental Health Provider ratio, 2023	41011	-	2273:1	476:1	244:1	-	806:1	915:1
Preventable hospital stays rate, 2021 (per 100,000 Medicare enrollees)								
Preventable hospital stays rate	2,601	-	1,730	2,164	2,447	2,423	2,785	1,814
Preventable hospital stays rate, (Black)	-	-	4,523	2,600	5,110	2,246	4,017	2,825
Preventable hospital stays rate, (White)	-	-	1,154	2,137	1,817	2,051	2,284	1,752
Mammography Screening, 2021								
Mammography screening, percent	44%	-	58%	52%	56%	49%	47%	55%
Mammography screening (White)	-	-	59%	51%	56%	55%	49%	56%
Mammography screening (Black)	-	-	50%	57%	62%	47%	43%	53%
Mammography screening (Asian)	-	-	54%	35%	25%	·	41%	37%
Mammography screening (Hispanic)	-	-	-	-	27%	·	38%	36%
Sources: Accessed: 3/10/2025								
2024 County Health Rankings & Roadmaps								
(-) data unavailable								
Red: Worse than state								

Leading Causes of Death, Rate (Per 100,000 Population) 2021-2023

	Virginia	Total Service Area	Williamsburg City	Gloucester County	James City County	King and Queen County	New Kent County	York County
Cancer	180.9	214.5	188.0	242.8	233.9	303.5	186.6	169.3
Heart/ Cardiovascular Disease	174.96	214.1	162.6	245.3	236.3	308.5	227.9	183.4
Stroke/ Cerebrovascular Disease	44.89	62.0	46.5	65.8	74.7	-	52.0	50.2
Injury	72.63	55.3	-	83.5	52.1	134.3	66.7	36.1
Alzheimer disease	28.3	49.6	48.6	54.8	59.9	-	38.7	36.6

Sources: Accessed: March 13, 2025

Centers for Disease Control and Prevention, [CDC - National Vital Statistics System](#). Accessed via [CDC WONDER](#). 2021-2023.

Red: Worse than state

Substance Use

Drug Overdose Crude Death, Rate (Per 100,000 Population), 2019-2023

Drug Overdose	26.4	19.6	-	31.0	14.6	-	27.9	14.5
---------------	------	------	---	------	------	---	------	------

Hospitalizations, Rate (Per 100,000 Population), 2020

Drug Overdose Hospitalizations	89.92	81.26	-	101.44	97.2	115.24	84.57	65.03
Substance Use Disorder (SUD)	75.05	55.62	-	72.08	54.12	129.66	101.49	37.57

Mortality, Rate (Per 100,000 Population), 2019-2023

Alcohol-Impaired Driving Deaths	1.6	2.0	1.3	1.5	1.0	3.0	3.5	2.9
Liver Disease and Cirrhosis	13.5	14.8	-	18.6	12.3	-	19.7	12.3

Substances, Crude Rate (Per 100,000 Population), 2022

Binge Drinking, past 30 days, age 18+	17.4%	17.2%	19.7%	17.9%	15.6%	15.0%	19.2%	17.6%
Smokers, age 18+	13.7%	12.6%	15.0%	15.5%	10.6%	19.3%	12.6%	11.4%

Sources: Accessed: February 23, 2025

[Virginia's Plan For Well-Being](#), Virginia Community Health Improvement Data Portal. Data Source: Centers for Disease Control and Prevention, [CDC - National Vital Statistics System](#). Accessed via [CDC WONDER](#). 2019-2023. Virginia Department of Health, [Virginia Department of Health](#). US Department of Transportation, National Highway Traffic Safety Administration, [Fatality Analysis Reporting System](#). 2018-2022. Centers for Disease Control and Prevention, Behavioral Risk Factor Surveillance System. Accessed via the [PLACES Data Portal](#). 2022

Red: Worse than state

Mental Health

	Virginia	Total Service Area	Williamsburg City	Gloucester County	James City County	King and Queen County	New Kent County	York County
--	----------	--------------------	-------------------	-------------------	-------------------	-----------------------	-----------------	-------------

Suicide Crude Death Rate (Per 100,000 Population), 2018-2022

Suicide	13.9	13.4	-	11.9	13.3	-	-	12.0
---------	------	------	---	------	------	---	---	------

Self-harm, ED Visit Counts Rate (Per 100,000 Population, age 5+), 2023

Self-harm and Suicide	680.9	-	-	638.5	625.4	766.8	670.5	346.9
-----------------------	-------	---	---	-------	-------	-------	-------	-------

Depression, Crude Rate (Per 100,000 Population), age 18+

Depression	22.5%	22.0	26.7	24.0	20.6	23.4	22.5	21.1
------------	-------	------	------	------	------	------	------	------

Mental Health, Crude Rate (Per 100,000 Population), age 18+

Poor Mental Health Days	16.5%	15.4%	20.7%	16.7%	13.5%	18.2%	15.2%	15.4%
-------------------------	-------	-------	-------	-------	-------	-------	-------	-------

Sources: Accessed: 2/23/2025

*[Virginia's Plan For Well-Being](#), Virginia Community Health Improvement Data Portal. Data Source: Centers for Disease Control and Prevention, [CDC - National Vital Statistics System](#). Accessed via [CDC WONDER](#). 2019-2023. Virginia Department of Health, [Syndromic Surveillance Data, Division of Surveillance and Investigation, Office of Epidemiology - Virginia Department of Health](#). Data directly obtained via email from Virginia Syndromic Surveillance 2023. Virginia Department of Health, Behavioral Risk Factor Surveillance Survey. Data directly obtained via email from Virginia Department of Health. 2021.

(-) data unavailable

SWRMC Emergency Department Behavioral Health Visits, Top 4 Diagnosis, 2024

	Behavioral Health (Patient Frequency)	Suicidal Ideation	Generalized Anxiety Disorder	Major Depressive Disorder	Bipolar Disorder
By Age					
Age 0-18	59	33.9%	6.8%	1.7%	1.7%
Age 19+	429	20.3%	5.6%	4.9%	2.6%
By Race					
Black	116	4.1%	1.8%	0.6%	0.6%
White	346	16.8%	7.6%	0.4%	1.6%
By Gender					
Male	243	11.9%	4.5%	0.4%	1.2%
Female	245	10.0%	5.5%	0.2%	1.2%

Sources: Accessed January 22, 2025

Sentara Healthcare Behavioral Health Emergency Department Visits Summary, 2024 (January 1, 2024 through December 31, 2024)

Cancer Incidence Rate: Annual Average Count / Rate Per 100,000, Age-adjusted 2017-2021

		Virginia	Williamsburg City	Gloucester County	James City County	King and Queen County	New Kent County	York County
Breast (female)	Prevalence Rate	129.0	-	17.2	33.7	-	31.5	31.4
	Average Annual Count	6,823	-	5	19	-	5	13
Prostate (male)	Prevalence Rate	106.6	98.1	109.6	105.7	81.7	121.6	121.6
	Average Annual Count	5,571	8	32	68	5	22	54
Lung and Bronchus	Prevalence Rate	51.3	52.2	63.8	40.5	69.3	81.2	47.6
	Average Annual Count	5,461	8	37	58	8	25	43
Colon & Rectum	Prevalence Rate	33.8	51.0	32.6	30.1	-	40.7	28.2
	Average Annual Count	3,401	7	18	38	-	11	23
All Sites	Prevalence Rate	411.2	504.8	453.1	413.7	464.1	504.8	410.5
	Average Annual Count	42,411	81	255	530	49	153	355

Trend: Falling

Trend: Rising

Trends compare to previous 5-year period

Virginia Cancer Incidence Rate by Race: Annual Average Count / Rate Per 100,000, Age-adjusted 2017-2020

		Prostate (Male)	Breast (Female)	Lung and Bronchus	Colon and Rectum
White	Prevalence Rate	93.0	131.9	53.5	33.6
	Average Annual Count	3,572	4,810	4,175	2,392
Black	Prevalence Rate	173.4	133.7	54.3	38.1
	Average Annual Count	1,533	1,325	988	678
Hispanic	Prevalence Rate	71.4	85.8	21.2	22.1
	Average Annual Count	146	251	86	110
Asian	Prevalence Rate	54.2	86.2	26.5	22.2
	Average Annual Count	140	304	149	133

Trend: Falling

Trend: Rising

Trends compare to previous 5-year period

Cancer Death Rate: Annual Average Count / Rate Per 100,000, Age-adjusted 2018-2022

		Virginia	Williamsburg City	Gloucester County	James City County	King and Queen County	New Kent County	York County
Breast (female)	Prevalence Rate	20.2	-	20.9	17.0	-	-	14.0
	Average Annual Count	1,133	-	6	12	-	-	6
Prostate (male)	Prevalence Rate	20.4	-	23.9	17.9	-	-	19.3
	Average Annual Count	853	-	5	12	-	-	7
Lung and Bronchus	Prevalence Rate	33.2	30.9	47.8	25.9	46.0	51.8	30.2
	Average Annual Count	3,567	6	27	39	5	15	28
Colon & Rectum	Prevalence Rate	12.9	-	14.2	12.4	-	12.2	10.9
	Average Annual Count	1,335	-	8	18	-	4	10
All Sites	Prevalence Rate	147.4	139.2	181.7	127.0	197.7	171.6	126.6
	Average Annual Count	15,451	27	102	185	21	51	115

Trend: Falling

Trend: Rising

Trends compare to previous 5-year period

Virginia Cancer Death Rate by Race: Annual Average Count / Rate Per 100,000, Age-adjusted 2017-2020

		Prostate (Male)	Breast (Female)	Lung and Bronchus	Colon and Rectum
White	Prevalence Rate	18.3	19.5	35.0	12.8
	Average Annual Count	582	782	2,768	955
Black	Prevalence Rate	38.1	27.0	36.0	16.9
	Average Annual Count	234	273	645	296
Hispanic	Prevalence Rate	11.4	11.8	11.0	6.5
	Average Annual Count	15	33	43	29
Asian	Prevalence Rate	9.8	12.0	17.0	8.4
	Average Annual Count	20	42	95	48

Trend: Falling

Trend: Rising

Trends compare to previous 5-year period

Sources: Accessed February 10, 2025

[National Cancer Institute, State Cancer Profiles: Incident Rates Table](#)

[National Cancer Institute, State Cancer Profiles: Mortality Rates Table](#)

Prevention: Cancer								
	Virginia	Total Service Area	Williamsburg City	Gloucester County	James City County	King and Queen County	New Kent County	York County
Cervical Cancer Screening Test, Crude Rate, females age 21-65, 2020								
Cervical Cancer	83.8%	84.9%	78.7%	82.9%	86.2%	84.6%	85.5%	85.6%
Mammography Screening, Crude Rate, females age 50-74, 2022								
Mammography	78.6%	79.1%	78.8%	75.8%	80.3%	75.7%	81.6%	79.2%
Colorectal Cancer Screening Test, Crude Rate, men age 45-75, 2022								
Colorectal Cancer	67.3%	71.8%	72.2%	67.6%	73.5%	70.1%	72.0%	72.1%
Adults with Cancer, Crude Rate, age 18+, 2022								
Cancer Diagnosis	8.1%	9.7%	6.9%	10.0%	11.1%	9.7%	9.2%	8.8%

Sources: Accessed: February 25, 2025

[Virginia's Plan For Well-Being](#), Centers for Disease Control and Prevention, [Behavioral Risk Factor Surveillance System](#). Accessed via the PLACES Data Portal. 2020 and Behavioral Risk Factor Surveillance System. Accessed via the PLACES Data Portal. 2022 .

Diabetes								
	Virginia	Total Service Area	Williamsburg City	Gloucester County	James City County	King and Queen County	New Kent County	York County
Adults Diagnosed with Diabetes, Crude Rate, age 18+, 2022								
Diabetes Diagnosis	12.7%	12.6%	10.1%	13.2%	13.5%	17.4%	11.8%	11.5%
Diabetes Hospitalizations, Rate per 100,000 Population, age 18+, 2022								
Diabetes Hospitalizations	2,114.24	2,140.63	38.32	2,274.49	2,794.67	3,558.05	2,820.53	1,423.43
Diabetes Mortality, Rate per 100,000 Population, 2022								
Diabetes Deaths	33.80	26.37	-	42.22	13.33	-	33.12	18.66

Sources: Accessed March 7, 2025

[Virginia's Plan For Well-Being](#), Virginia Department of Health, Inpatient Discharge Dataset from Virginia Health Information (VHI). Data directly obtained via email from Virginia Department of Health 2022. Centers for Disease Control and Prevention, [Behavioral Risk Factor Surveillance System](#). Accessed via the PLACES Data Portal. 2022. Virginia Department of Health, [Virginia Department of Health, Office of Information Management, Division of Health Statistics](#). Data directly obtained via email from Virginia Department of Health 2022.

Red: Worse than state

Chronic Conditions, Rate per 100,000 Population, 2022								
Asthma Hospitalizations, rate	619.52	640.97	19.66	686.08	831.06	936.33	790.76	459.54
Hypertension Hospitalizations, rate	4,360.69	4,954.39	163.84	5,208.36	6,857.19	6,957.65	6,283.83	3,083.86
Stroke Hospitalizations, rate	263.13	281.16	13.11	298.99	382.67	446.56	355.21	174.86
Deaths due to Diseases of the Heart, rate	174.96	152.84	111.66	194.75	126.90	206.19	190.84	139.90
Deaths due to Chronic Lower Respiratory Diseases, rate	39.52	30.52	21.57	35.96	21.76	79.09	32.90	24.16

Sources: Accessed: 3/10/2025

[Virginia's Plan For Well-Being](#), Virginia Department of Health, [Inpatient Discharge Dataset from Virginia Health Information \(VHI\)](#) and [Virginia Department of Health, Office of Information Management, Division of Health Statistics](#). Data directly obtained via email from Virginia Department of Health 2022.

Red: Worse than state

Medicare Primary Chronic Conditions, Primary Condition Prevalence Percentage, 2023

	Virginia	Williamsburg City	Gloucester County	James City County	King and Queen County	New Kent County	York County
Hypertension	66%	66%	70%	67%	69%	69%	67%
Diabetes	25%	20%	26%	21%	29%	27%	22%
Obesity	18%	19%	24%	21%	32%	29%	23%
Depression	16%	17%	18%	18%	17%	18%	17%
Kidney Disease	17%	16%	20%	16%	19%	20%	15%
Ischemic Heart Disease	19%	17%	18%	18%	21%	20%	18%
Heart Failure	11%	12%	10%	12%	11%	11%	11%
Atrial Fibrillation	14%	14%	14%	16%	15%	13%	15%
Obstructive Pulmonary Disease	10%	10%	13%	9%	13%	12%	9%
Cancer (Colorectal, breast, prostate, lung)	12%	13%	12%	14%	11%	13%	13%
Asthma	7%	8%	7%	7%	5%	7%	7%
Alzheimer's and Dementia	6%	7%	6%	8%	5%	6%	6%

Sources: Accessed March 13, 2025

Centers for Medicare & Medicaid Services Data, Mapping Medicare Disparities by Population (cms.gov)

Red: Worse than state

Births, Birthweight and Infant Death by Locality of Residence 2020-2022

Total Live Births to Residents	95,615	2,140	67	372	741	67	273	620
Teen Pregnancies, Ages 15-19	4,166	65	6	15	21	-	6	13
Preterm Births, percentage, 2022	9.61%	8.74%	13.43%	9.95%	6.34%	7.46%	10.26%	9.84%
Mothers with Late or No Prenatal Care, Percent of Total Live Births	5.1%	8.55%	26.87%	2.69%	12.42%	-	4.76%	7.58%

Low Birthweight Birth Rates (birth weight less than 5 pounds 8 ounces)

Low Birth Weight	8,088	145	5	29	41	-	18	48
Low Birth Weight, percent	8.46%	6.78%	7.46%	7.80%	5.53%	-	6.59%	7.74%

Infant Death Rates

Total Infant Deaths / Rate per 1,000 Births	5.98	5.47	-	8.23	5.57	-	6.51	3.80
Total Infant Deaths	1,711	35	-	9	13	-	5	7
Total Infant Death Rate (White)	4.93	-	-	-	-	-	-	-
Total Infant Death Rate (Black)	12.09	-	-	-	-	-	-	-

Substance Use, Birth Hospitalizations, Rate per 1,000 Birth Hospitalizations

Neonatal Abstinence Syndrome (NAS), Rate	5.7	-	-	23.0	2.5	-	-	6.8
Maternal Opioid Use Disorder (OUD), Rate	4.72	-	-	18.23	1.21	-	-	6.78
Smoking during Pregnancy, Percent of Total Live Births	3.21%	2.90%	-	6.45%	1.89%	7.46%	2.93%	1.61%

Sources: Accessed: March 13, 2025

Virginia's Plan For Well-Being, Virginia Department of Health, [VDH - Maternal & Child Health](#). Data directly obtained via email from Virginia Department of Health 2022. Virginia Department of Health, [Virginia Department of Health, Office of Information Management, Division of Health Statistics](#). Data directly obtained via email from Virginia Department of Health 2020.

(-) data unavailable

Red: Worse than State and White population rates

Quality of Life								
	Virginia	Total Service Area	Williamsburg City	Gloucester County	James City County	King and Queen County	New Kent County	York County
Food insecure, 2021	8%	-	10%	8%	7%	7%	8%	6%
Limited access to health foods, 2019	4%	-	6%	2%	9%	5%	-	3%
Physical inactivity, 2021	20%	-	22%	21%	18%	24%	19%	17%
Access to exercise opportunities, 2023	84%	-	100%	75%	97%	22%	86%	90%
Firearm fatality rate, per 100,000 population, 2017-2021	13	-	-	12	9	-	-	9
*Adults with obesity, 2021	35.1%	34.8%	31.8%	37.1%	33.6%	41.8%	38.1%	33.6%
*Poor or fair health, 2022	16.7%	15.5%	15.3%	17.5%	15.8%	23.4%	13.9%	14.0%
*Poor physical health days, age 18+, crude, 2022	12.4%	12.1%	11.6%	13.7%	12.2%	16.7%	11.4%	11.1%
*Frequent physical distress, 2020	10%	11%	11%	10%	9%	12%	10%	9%
*Insufficient sleep, age 18+, 2022	35%	36%	36%	37%	31%	38%	33%	34%
*Injury death rate, per 100,000 population, 2020-2022	72.63	57.49	42.52	66.83	44.56	143.95	62.85	36.31

Sources: Accessed: February 25, /2025

[2024 County Health Rankings & Roadmaps](#)

*[Virginia's Plan For Well-Being](#), Centers for Disease Control and Prevention, [Behavioral Risk Factor Surveillance System](#). Accessed via the [PLACES Data Portal](#). 2022. Virginia Department of Health, Virginia Department of Health, Office of Information Management, Division of Health Statistics.

(-) data unavailable

Red: Worse than State rates

Transportation Profile, 2019-23								
Workers age 16+	4,308,387	112,472	6,467	19,129	35,599	3,229	12,160	35,888
Drive alone, percent	69.2%	76.0%	57.7%	85.6%	75.2%	77.9%	75.1%	75.0%
Carpool, percent	8.2%	6.5%	6.0%	4.1%	6.6%	9.6%	5.3%	8.1%
Public transportation, percent	2.6%	0.4%	1.1%	0.1%	0.6%	0.2%	0.2%	0.2%
Bicycle or walk, percent	2.4%	2.5%	15.0%	0.4%	1.5%	0.8%	0.3%	3.2%
Taxi or other, percent	1.4%	0.8%	1.0%	1.5%	0.4%	0.3%	1.0%	0.7%
Work at home, percent	16.3%	13.9%	19.3%	8.4%	15.7%	11.2%	18.2%	12.8%
No motor vehicle, percent	6.00%	3.55%	8.18%	2.19%	3.76%	2.25%	1.42%	4.04%

Sources: Accessed: February 21, 2025

[Virginia's Plan For Well-Being](#), US Census Bureau, American Community Survey, 2019-23.

Appendix C: Community Input

Community Survey Responses

The survey was conducted with a broad-based group of community stakeholders and community members in Eastern Shore, Middle Peninsula, Peninsula, South Hampton Roads, Western Tidewater, and Northern East region of North Carolina. Surveys were available online and in English and Spanish by paper submission. The survey asked participants details about themselves, such as gender, race, diversity, equity, and inclusion (DEI), income, and zip code, as well as their opinion about important health concerns in the community for adults and for children.

The surveys were made available to the public from October 1, 2024 – February 28, 2025, in paper format and electronically using REDCap. A community stakeholder list of more than 1,500 unduplicated stakeholders was used to email the survey to request participation and included representatives from public health, education, social services, business, local government, and local civic organizations, among others. Feedback was received throughout the survey period on the age, gender, race/ethnicity, and language of survey respondents to assist in promoting the surveys to various community members.

The survey allowed responses from both community members and stakeholders:

Let Your Voice Be Heard

Please complete the survey below.

Thank you!

Bon Secours Hampton Roads, Children's Hospital of The King's Daughters, Riverside Health, Sentara Health, and the Hampton and Peninsula Health Districts are jointly conducting this survey.

The survey will take 5-10 minutes to complete and the results will help us identify and prioritize your community's health concerns. It will also assist in finding ways to make positive changes in your community's overall health and well-being. We know your time is valuable and thank you in advanced for completing this survey.

I am taking this survey:

- As a community member answering for myself and my family
- On behalf of a community organization or business

Community Member: Your Community

1) Below is a list of Virginia and North Carolina communities. In which locality listed below do you live?

- | | | |
|--|---|---|
| <input type="checkbox"/> Accomack County, VA | <input type="checkbox"/> Lancaster County, VA | <input type="checkbox"/> Sussex County, VA |
| <input type="checkbox"/> Charles City County, VA | <input type="checkbox"/> Lorton (City of), VA | <input type="checkbox"/> Virginia Beach (City of), VA |
| <input type="checkbox"/> Charlottesville (City of), VA | <input type="checkbox"/> Louisa County, VA | <input type="checkbox"/> Williamsburg (City of), VA |
| <input type="checkbox"/> Chesapeake (City of), VA | <input type="checkbox"/> Mathews County, VA | <input type="checkbox"/> York County, VA |
| <input type="checkbox"/> Dumfries (Town of), VA | <input type="checkbox"/> Middlesex County, VA | <input type="checkbox"/> Albemarle County, NC |
| <input type="checkbox"/> Fluvanna County, VA | <input type="checkbox"/> Nelson County, VA | <input type="checkbox"/> Bertie County, NC |
| <input type="checkbox"/> Franklin (City of), VA | <input type="checkbox"/> New Kent County, VA | <input type="checkbox"/> Camden County, NC |
| <input type="checkbox"/> Gloucester County, VA | <input type="checkbox"/> Newport News (City of), VA | <input type="checkbox"/> Chowan County, NC |
| <input type="checkbox"/> Greene County, VA | <input type="checkbox"/> Norfolk (City of), VA | <input type="checkbox"/> Currituck County, NC |
| <input type="checkbox"/> Hampton (City of), VA | <input type="checkbox"/> Northampton County, VA | <input type="checkbox"/> Dare County, NC |
| <input type="checkbox"/> Isle of Wight County, VA | <input type="checkbox"/> Poquoson (City of), VA | <input type="checkbox"/> Gates County, NC |
| <input type="checkbox"/> James City County, VA | <input type="checkbox"/> Portsmouth (City of), VA | <input type="checkbox"/> Hertford County, NC |
| <input type="checkbox"/> King and Queen County, VA | <input type="checkbox"/> Southampton County, VA | <input type="checkbox"/> Pasquotank County, NC |
| <input type="checkbox"/> King William County, VA | <input type="checkbox"/> Suffolk (City of), VA | <input type="checkbox"/> Perquimans County, NC |
| | <input type="checkbox"/> Surry County, VA | |

2) Please share your ZIP code. _____

3) Please check the top 3 most important health concerns for CHILDREN/YOUTH (ages 0-17) and the top 3 concerns for ADULTS, in your community.

	Children	Adults
Asthma/Allergies		
Cancer		
Dental/Oral health		
Diabetes		
Heart conditions		
High blood pressure		
Maternal health (pregnancy and postpartum care)		
Mental health (anxiety, depression, bipolar disorder, isolation)		
Neonatal/newborn health		
Neurological disorders (MS, stroke, Alzheimer's/dementia, concussions, autism)		
Obesity		
Sexual transmitted infections (STI)		

4) Please share any specific information about your top 3 concerns for children or adults (e.g., types of cancer, mental health conditions, etc.)._____

5) Please check the top 3 barriers to accessing healthcare resources and services, for CHILDREN/YOUTH (ages 0-17) and the top 3 barriers for ADULTS, in your community.

	Children	Adults
Cost		
Did not know where to go or how to find a doctor		
Language		
Limited or no internet access		
Limited or no insurance		
Long wait for a scheduled appointment		
No appointments available for new patients		
No appointments available after 5 pm or on weekends		
No local medical care available within one hour's drive from my home		
Responsibility as a caregiver for another person (child or adult)		
Transportation		
Work-related issues (time off/leave)		
Not listed		
None of the above		

6) Which of the following is the greatest concern for CHILDREN/YOUTH (ages 0-17)?

- | | |
|--|---|
| <input type="checkbox"/> Alcohol use | <input type="checkbox"/> Prescription medication misuse |
| <input type="checkbox"/> Bullying and cyberbullying | <input type="checkbox"/> Sex trafficking |
| <input type="checkbox"/> Gambling online | <input type="checkbox"/> Tobacco and vaping use |
| <input type="checkbox"/> Gang involvement | <input type="checkbox"/> Teen pregnancy |
| <input type="checkbox"/> Gun access/safety | <input type="checkbox"/> Not listed |
| <input type="checkbox"/> Illegal drug use (fentanyl and cocaine) | <input type="checkbox"/> None of the above |
| <input type="checkbox"/> Marijuana use | |

7) Which of the following is the greatest concern for ADULTS in your community?

- | | |
|--|---|
| <input type="checkbox"/> Addiction to alcohol | <input type="checkbox"/> Marijuana use |
| <input type="checkbox"/> Gambling | <input type="checkbox"/> Prescription medication misuse |
| <input type="checkbox"/> Gang involvement | <input type="checkbox"/> Sex trafficking |
| <input type="checkbox"/> Gun access/safety | <input type="checkbox"/> Tobacco and vaping use |
| <input type="checkbox"/> Illegal drugs use (e.g., fentanyl, cocaine, etc.) | <input type="checkbox"/> Not listed |
| | <input type="checkbox"/> None of the above |

8) Please check the top 3 social concerns impacting health for CHILDREN/YOUTH (ages 0-17) and the top 3 concerns for ADULTS, in your community.

	Children	Adults
Homelessness		
Lack of available healthy food		
Lack of affordable housing		
Lack of available housing		
Lack of parenting support/education services		
Lack of quality schools		
Lack of a safe place to play or exercise		
Loneliness/Isolation		
Violence in homes (adult partner, child, and elderly abuse)		
Violence in the community (gun and/or gang)		
Not listed		

9. Please select the top 3 personal factors that impact the quality of healthcare that CHILDREN/YOUTH and/or ADULTS receive?

- | | |
|---|---|
| <input type="checkbox"/> Age | <input type="checkbox"/> Intellectual disabilities |
| <input type="checkbox"/> Race | <input type="checkbox"/> Physical disabilities |
| <input type="checkbox"/> Ethnicity | <input type="checkbox"/> Relationship with medical provider |
| <input type="checkbox"/> Immigration status | <input type="checkbox"/> Religious beliefs |
| <input type="checkbox"/> Language | <input type="checkbox"/> Sexual orientation |
| <input type="checkbox"/> Sex | <input type="checkbox"/> Type of health insurance/How I pay for health services |
| <input type="checkbox"/> Gender | <input type="checkbox"/> None of the above |
| <input type="checkbox"/> Level of education | |

10) Which of the following do you consider to be your most trusted source of health information?

- | | |
|--|---|
| <input type="checkbox"/> Faith-based organization | <input type="checkbox"/> Local health systems website (hospital, free clinics, etc.) |
| <input type="checkbox"/> Friends/Family | <input type="checkbox"/> My healthcare provider (doctor, pediatrician, physician assistant, nurse) |
| <input type="checkbox"/> Internet | <input type="checkbox"/> My military or VA healthcare provider (doctor, pediatrician, physician assistant, nurse) |
| <input type="checkbox"/> Social media (Instagram, X, Facebook) | <input type="checkbox"/> Federal government (CDC) |
| <input type="checkbox"/> Local or national news sources, newspaper | |
| <input type="checkbox"/> State/local government (health department, mayor, governor) | |

11) Please check the top 3 environmental health safety concerns in the community where you live.

- | | |
|--|--|
| <input type="checkbox"/> Quality drinking water in your home | <input type="checkbox"/> Lead |
| <input type="checkbox"/> Beach water quality | <input type="checkbox"/> Mold |
| <input type="checkbox"/> Air quality | <input type="checkbox"/> Mosquitoes |
| <input type="checkbox"/> Rabies | <input type="checkbox"/> None of the above |
| <input type="checkbox"/> Foodborne illness | |

12) Gender: How do you identify?

- Male
- Female
- Non-binary
- Prefer to self-describe

13) Race (limit two selections)

- African American/Black
- Asian/Pacific Islander
- Hispanic/Latino
- Indigenous Populations
- Middle Eastern
- White/Caucasian
- Not listed

14) Age (years)

- 18-25
- 26-39
- 40-54
- 55-64
- 65+

15) Highest Level of Education Completed

- High school diploma or GED
- Some college
- College degree or higher
- Trade certification
- None of the above

16) Primary Language Spoken in Your Home

- | | | |
|--|---|--|
| <input type="checkbox"/> Arabic | <input type="checkbox"/> Hindi | <input type="checkbox"/> Sign language |
| <input type="checkbox"/> English | <input type="checkbox"/> Japanese | <input type="checkbox"/> Spanish |
| <input type="checkbox"/> Farsi/Persian | <input type="checkbox"/> Korean | <input type="checkbox"/> Tagalog |
| <input type="checkbox"/> German | <input type="checkbox"/> Mandarin | <input type="checkbox"/> Vietnamese |
| <input type="checkbox"/> Gujarati | <input type="checkbox"/> Mon-Khmer, Cambodian | <input type="checkbox"/> Not listed |
| <input type="checkbox"/> Haitian/French Creole | <input type="checkbox"/> Russian | |

17) Medical Insurance- check all that apply

- Indian Health Services
- Medicaid
- Medicare
- Private insurance (e.g., individual, exchange plan, employer sponsored, etc.)
- Military (Tricare/VA benefits)
- Uninsured/Self-pay

18) Housing

- Homeless
- Own
- Rent
- Temporary housing

Members in Household

19) Number of Adults Living in the Home _____

20) Number of Children (0-17) Living in the Home _____

21) Age Range of Children

- Newborn - 4 years old
- 5-11
- 12-17
- No children live in my home

Stakeholder: Your Community

Below is a list of Virginia and North Carolina communities. Please tell us which localities you view as the community your serve. (Check all that apply even if your perspective only includes one part of a city or county).

- | | | |
|--|---|---|
| <input type="checkbox"/> Accomack County, VA | <input type="checkbox"/> Lancaster County, VA | <input type="checkbox"/> Sussex County, VA |
| <input type="checkbox"/> Charles City County, VA | <input type="checkbox"/> Lorton (City of), VA | <input type="checkbox"/> Virginia Beach (City of), VA |
| <input type="checkbox"/> Charlottesville (City of), VA | <input type="checkbox"/> Louisa County, VA | <input type="checkbox"/> Williamsburg (City of), VA |
| <input type="checkbox"/> Chesapeake (City of), VA | <input type="checkbox"/> Mathews County, VA | <input type="checkbox"/> York County, VA |
| <input type="checkbox"/> Dumfries (Town of), VA | <input type="checkbox"/> Middlesex County, VA | <input type="checkbox"/> Albemarle County, NC |
| <input type="checkbox"/> Fluvanna County, VA | <input type="checkbox"/> Nelson County, VA | <input type="checkbox"/> Bertie County, NC |
| <input type="checkbox"/> Franklin (City of), VA | <input type="checkbox"/> New Kent County, VA | <input type="checkbox"/> Camden County, NC |
| <input type="checkbox"/> Gloucester County, VA | <input type="checkbox"/> Newport News (City of), VA | <input type="checkbox"/> Chowan County, NC |
| <input type="checkbox"/> Greene County, VA | <input type="checkbox"/> Norfolk (City of), VA | <input type="checkbox"/> Currituck County, NC |
| <input type="checkbox"/> Hampton (City of), VA | <input type="checkbox"/> Northampton County, VA | <input type="checkbox"/> Dare County, NC |
| <input type="checkbox"/> Isle of Wight County, VA | <input type="checkbox"/> Poquoson (City of), VA | <input type="checkbox"/> Gates County, NC |
| <input type="checkbox"/> James City County, VA | <input type="checkbox"/> Portsmouth (City of), VA | <input type="checkbox"/> Hertford County, NC |
| <input type="checkbox"/> King and Queen County, VA | <input type="checkbox"/> Southampton County, VA | <input type="checkbox"/> Pasquotank County, NC |
| <input type="checkbox"/> King William County, VA | <input type="checkbox"/> Surry County, VA | <input type="checkbox"/> Perquimans County, NC |
| | <input type="checkbox"/> Suffolk (City of), VA | |

Please select from the list below the type of employer or organization you most identify with as you complete this survey.

- | | |
|---|--|
| <input type="checkbox"/> State, local or regional health departments | <input type="checkbox"/> Local school districts |
| <input type="checkbox"/> Members of the medically underserved, low-income and minority populations or organizations representing medically underserved, low-income and minority populations | <input type="checkbox"/> Healthcare providers and community health centers |
| <input type="checkbox"/> Healthcare consumers and consumer advocates | <input type="checkbox"/> Academic experts |
| <input type="checkbox"/> Nonprofit and community-based organizations | <input type="checkbox"/> Health insurance and managed care organizations |
| <input type="checkbox"/> Local government officials | <input type="checkbox"/> Private businesses |
| | <input type="checkbox"/> Labor and workforce representatives |
| | <input type="checkbox"/> Military representatives |
| | <input type="checkbox"/> Civic organizations |

Please share your organization's name. _____

Please share your role in your organization. _____

Stakeholder: Community Priorities

Please check the top 3 most important health concerns for CHILDREN and ADULTS in the community you serve.

	Children	Adults
Asthma/Allergies		
Cancer		
Dental/Oral health		
Diabetes		
Heart conditions		
High blood pressure		
Maternal health (pregnancy and postpartum care)		
Mental health (anxiety, depression, bipolar disorder, isolation)		
Neonatal/newborn health		
Neurological disorders (MS, stroke, Alzheimer's/dementia, concussions, autism)		
Obesity		
Sexual transmitted infections (STI)		

Please share any specific information about your top 3 concerns (i.e. types of cancer, mental health conditions, etc.) _____

Stakeholder: Barriers

Please check the top 3 barriers to accessing healthcare resources and services for CHILDREN and ADULTS in the community you serve.

	Children	Adults
Cost		
Did not know where to go or how to find a doctor		
Language		
Limited or no internet access		
Limited or no insurance		
Long wait for a scheduled appointment		
No appointments available for new patients		
No appointments available after 5 pm or on weekends		
No local medical care available within one hour's drive from my home		
Responsibility as a caregiver for another person (child or adult)		
Transportation		
Work-related issues (time off/leave)		
Not listed		
None of the above		

6) Which of the following is the greatest concern for CHILDREN/YOUTH (ages 0-17)?

- Alcohol use
- Bullying and cyberbullying
- Gambling online
- Gang involvement
- Gun access/safety
- Illegal drug use (fentanyl and cocaine)
- Marijuana use
- Prescription medication misuse
- Sex trafficking
- Tobacco and vaping use
- Teen pregnancy
- Not listed
- None of the above

7) Which of the following is the greatest concern for ADULTS in your community?

- Addiction to alcohol
- Gambling
- Gang involvement
- Gun access/safety
- Illegal drugs use (e.g., fentanyl, cocaine, etc.)
- Marijuana use
- Prescription medication misuse
- Sex trafficking
- Tobacco and vaping use
- Not listed
- None of the above

Please check the top 3 social concerns impacting health for CHILDREN/YOUTH (ages 0-17) and the top 3 concerns for ADULTS, in your community.

	Children	Adults
Homelessness		
Lack of available healthy food		
Lack of affordable housing		
Lack of available housing		
Lack of parenting support/education services		
Lack of quality schools		
Lack of a safe place to play or exercise		
Loneliness/Isolation		
Violence in homes (adult partner, child, and elderly abuse)		
Violence in the community (gun and/or gang)		
Not listed		

Please share any specific information about your top 3 concerns selected (i.e. violence in the community, quality of schools, homelessness, environmental safety, etc.) _____

Please select the top 3 personal factors that impact the quality of healthcare that CHILDREN/YOUTH and/or ADULTS receive?

- Age
- Race
- Ethnicity
- Immigration status
- Language
- Sex
- Gender
- Level of education
- Intellectual disabilities
- Physical disabilities
- Relationship with medical provider
- Religious beliefs
- Sexual orientation
- Type of health insurance/How I pay for health services
- None of the above

Which of the following do you feel your clients consider to be the most trusted source of health information?

- Faith based organization
- Friends/family
- Internet/social media
- Local or national news sources, newspaper
- State/local government (health department, mayor, governor)
- Local health systems website (hospital, free clinics, etc.)
- My healthcare provider (doctor, pediatrician, physician assistant, nurse)
- My military or VA healthcare provider (doctor, pediatrician, physician assistant, nurse)
- National government (CDC)

Community Members

Total Responses for SWRMC and SSCV Service Area Cities

	Total	Williamsburg City	Gloucester County	James City County	King and Queen County	New Kent County	York County
Responses	1,642	186	63	860	4	30	499
%		11.3%	3.8%	52.4%	0.2%	1.8%	30.4%
Zip Codes							
Williamsburg City	20120, 23072, 23124, 23168, 23185, 23188, 23189, 23233, 23881						
Gloucester County	23061, 23062, 23072, 23128, 90048						
James City County	23089, 23168, 23185, 23188, 23661, 24168, 24185, 24188, 34185, 43215						
King and Queen County	23148, 23156, 23185, 23838						
New Kent County	23089, 23124, 23140, 23141, 23181						
York County	23185, 23188 23603, 23662, 23665, 23690, 23692, 23693, 23964, 23696, 23963, 32185						
Gender							
Female %	62.2%	65.2%	77.4%	59.5%	75.0%	66.7%	63.5%
Total	1017	120	48	510	3	20	316
Male %	37.3%	33.7%	22.6%	40.3%	25.0%	30.0%	35.9%
Total	610	62	14	345	1	9	179
Non-binary %	0.4%	1.1%	0.0%	0.0%	0.0%	0.0%	0.8%
Total	6	2	0	0	0	0	4
Prefer not to answer %	0.2%	0.0%	0.0%	0.2%	0.0%	3.3%	0.2%
Total	4	0	0	2	0	1	1
Race/Ethnicity							
White %	91.8%	88.0%	90.3%	94.9%	100.0%	86.7%	88.4%
Total	1502	162	56	814	4	26	440
Black %	4.8%	6.0%	6.5%	3.5%	0.0%	13.3%	6.0%
Total	79	11	4	30	0	4	30
Asian %	2.3%	4.9%	3.2%	1.0%	0.0%	3.3%	3.4%
Total	38	9	2	9	0	1	17
Indigenous Population %	0.8%	1.1%	4.8%	0.2%	0.0%	0.0%	1.2%
Total	13	2	3	2	0	0	6
Middle Eastern %	0.2%	0.0%	0.0%	0.1%	0.0%	0.0%	0.6%
Total	4	0	0	1	0	0	3
Not listed %	1.3%	1.6%	1.69%	0.8%	0.0%	3.3%	1.8%
Total	21	3	1	7	0	1	9
Hispanic %	2.1%	4.3%	1.6%	1.7%	0.0%	3.3%	2.0%
Total	35	8	1	15	0	1	10
Spoken Language in Home							
English %	98.8%	96.7%	100.0%	99.2%	100.0%	100.0%	98.8%
Total	1618	178	63	850	4	30	493
Arabic %	0.1%	0.5%	0.0%	0.0%	0.0%	0.0%	0.0%
Total	1	1	0	0	0	0	0
German %	0.1%	0.0%	0.0%	0.1%	0.0%	0.0%	0.0%
Total	1	0	0	1	0	0	0
Gujarati %	0.1%	0.0%	0.0%	0.0%	0.0%	0.0%	0.0%
Total	1	0	0	0	0	0	0
Japanese %	0.1%	0.0%	0.0%	0.0%	0.0%	0.0%	0.2%
Total	1	0	0	0	0	0	1
Mandarin %	0.2%	0.5%	0.0%	0.1%	0.0%	0.0%	0.4%
Total	4	1	0	1	0	0	2
Spanish %	0.3%	1.1%	0.0%	0.1%	0.0%	0.0%	0.4%
Total	5	2	0	1	0	0	2
Not listed %	0.4%	1.1%	0.0%	0.5%	0.0%	0.0%	0.0%
Total	6	2	0	4	0	0	0

Ages							
	Total	Williamsburg City	Gloucester County	James City County	King and Queen County	New Kent County	York County
18+25 %	0.9%	3.8%	4.8%	0.6%	0.0%	0.0%	0.0%
Total	15	7	3	5	0	0	0
26-39 %	7.3%	7.6%	22.6%	5.5%	0.0%	13.3%	8.2%
Total	120	14	14	47	0	4	41
40-54 %	15.8%	15.2%	29.0%	10.7%	0.0%	46.7%	21.3%
Total	258	28	18	92	0	14	106
55-64 %	17.6%	15.2%	19.4%	16.0%	25.0%	13.3%	21.3%
Total	288	28	12	137	1	4	106
65+ %	58.3%	58.2%	24.2%	67.2%	75.0%	26.7%	49.2%
Total	953	107	15	575	3	8	245
Education							
High school diploma or GED %	3.8%	4.4%	11.1%	3.9%	0.0%	3.3%	2.6%
Total	62	8	7	33	0	1	13
Some college %	14.0%	17.5%	12.7%	12.5%	0.0%	16.7%	15.3%
Total	228	32	8	107	0	5	76
College degree or higher %	80.4%	77.0%	73.0%	82.3%	100.0%	70.0%	79.9%
Total	1314	141	46	705	4	21	397
Trade certification %	1.5%	0.5%	1.6%	1.2%	0.0%	10.0%	2.0%
Total	25	1	1	10	0	3	10
None of the above %	0.3%	0.5%	1.6%	0.2%	0.0%	0.0%	0.2%
Total	5	1	1	2	0	0	1
Medical Insurance							
Indian Health Services %	0.1%	0.0%	0.0%	0.0%	0.0%	0.0%	0.2%
Total	1	0	0	0	0	0	1
Medicaid %	4.8%	8.2%	14.3%	4.6%	0.0%	10.0%	2.6%
Total	79	15	9	39	0	3	13
Medicare %	55.1%	54.9%	25.4%	63.7%	75.0%	20.0%	46.2%
Total	901	101	16	545	3	6	230
Private Insurance %	61.5%	61.4%	58.7%	60.9%	25.0%	83.3%	62.0%
Total	1006	113	37	521	1	25	309
Military (Tricare/VA) %	16.8%	12.5%	25.4%	13.1%	0.0%	0.0%	24.7%
Total	275	23	16	112	0	0	123
Uninsured/self-pay	1.6%	1.6%	3.2%	1.5%	0.0%	3.3%	1.4%
Total	26	3	2	13	0	1	7
Housing							
Homeless %	0.3%	0.6%	0.0%	0.4%	0.0%	3.4%	0.0%
Total	5	1	0	3	0	1	0
Own %	89.1%	81.6%	84.1%	91.6%	100.0%	86.2%	88.3%
Total	1416	146	53	759	4	25	429
Rent %	10.1%	16.2%	14.3%	7.6%	0.0%	10.3%	11.5%
Total	160	29	9	63	0	3	56
Temporary housing %	0.6%	1.7%	1.6%	0.5%	0.0%	0.0%	0.2%
Total	9	3	1	4	0	0	1

Please check the top 3 most important health concerns:

For children/youth (ages 0-17).

	Total	Williamsburg City	Gloucester County	James City County	King and Queen County	New Kent County	York County
Asthma/Allergies	43.6%	44.1%	44.4%	41.7%	0.0%	46.7%	46.7%
Cancer	13.9%	12.4%	12.7%	13.6%	25.0%	10.0%	15.2%
Dental/Oral health	27.1%	33.3%	34.9%	25.9%	50.0%	30.0%	25.5%
Diabetes	12.8%	7.5%	19.0%	13.8%	25.0%	6.7%	12.4%
Heart conditions	1.7%	2.2%	1.6%	2.0%	0.0%	0.0%	1.2%
High blood pressure	0.8%	1.1%	0.0%	0.8%	0.0%	3.3%	0.6%
Maternal health	10.0%	14.0%	1.6%	10.8%	0.0%	3.3%	8.8%
Mental health	59.4%	57.5%	58.7%	57.8%	100.0%	70.0%	61.9%
Neonatal/newborn health	18.1%	17.2%	15.9%	18.7%	0.0%	10.0%	18.2%
Neurological disorders	7.8%	8.1%	11.1%	7.0%	0.0%	16.7%	8.2%
Obesity	45.2%	41.4%	38.1%	45.3%	100.0%	43.3%	46.9%
Sexual transmitted infections	5.8%	6.5%	1.6%	5.9%	0.0%	10.0%	5.8%

Please check the top 3 most important health concerns:

For adults.

Asthma/Allergies	8.0%	9.1%	7.9%	6.7%	0.0%	13.3%	9.6%
Cancer	53.0%	46.2%	50.8%	56.0%	50.0%	53.3%	50.7%
Dental/Oral health	11.2%	10.2%	22.2%	11.0%	25.0%	10.0%	10.4%
Diabetes	31.7%	26.9%	31.7%	31.4%	25.0%	33.3%	34.1%
Heart conditions	40.7%	41.4%	33.3%	42.3%	25.0%	36.7%	39.1%
High blood pressure	29.1%	28.5%	34.9%	28.1%	0.0%	30.0%	30.5%
Maternal health	11.8%	11.8%	14.3%	12.0%	25.0%	23.3%	10.2%
Mental health	41.4%	41.4%	54.0%	38.7%	25.0%	40.0%	44.5%
Neonatal/newborn health	1.0%	0.5%	1.6%	0.8%	0.0%	0.0%	1.4%
Neurological disorders	36.7%	41.4%	27.0%	39.2%	25.0%	33.3%	32.3%
Obesity	32.5%	31.7%	27.0%	31.2%	25.0%	23.3%	36.5%
Sexual transmitted infections	1.3%	1.6%	0.0%	1.0%	0.0%	0.0%	1.8%

Please check the top 3 barriers to accessing healthcare resources and services:

For children/youth (ages 0-17).

Cost	44.3%	41.9%	42.9%	42.9%	75.0%	50.0%	47.3%
Did not know where to go or how to find doctor	12.8%	15.6%	6.3%	14.1%	0.0%	13.3%	10.4%
Language	4.2%	5.4%	1.6%	5.2%	0.0%	0.0%	2.6%
Limited or no internet access	2.4%	3.8%	3.2%	2.2%	25.0%	3.3%	1.8%
Limited or no insurance	41.3%	42.5%	31.7%	42.9%	75.0%	36.7%	39.3%
Long wait for a scheduled appointment	37.3%	24.7%	36.5%	35.0%	100.0%	26.7%	46.3%
No appointments available for new patients	22.1%	18.3%	28.6%	20.6%	25.0%	20.0%	25.5%
No appointments available after 5pm or weekends	22.1%	23.7%	19.0%	20.6%	0.0%	36.7%	23.8%
No local medical care available within one hour's drive from my home	2.2%	2.2%	6.3%	2.3%	0.0%	6.7%	1.2%
Responsibility as a caregiver for another person	4.6%	4.8%	7.9%	4.0%	0.0%	10.0%	4.8%
Transportation	10.4%	11.8%	9.5%	11.5%	0.0%	6.7%	8.2%

Work-related issues (time off/leave)	10.0%	10.2%	6.3%	10.3%	0.0%	3.3%	10.4%
Not Listed	3.2%	4.3%	6.3%	3.0%	0.0%	0.0%	5.2%
None of the above	5.8%	6.5%	1.6%	6.3%	0.0%	6.7%	0.0%

Please check the top 3 barriers to accessing healthcare resources and services:

For adults.

	Total	Williamsburg City	Gloucester County	James City County	King and Queen County	New Kent County	York County
Cost	49.1%	44.1%	41.3%	47.8%	75.0%	53.3%	53.7%
Did not know where to go or how to find doctor	11.0%	16.7%	7.9%	10.5%	0.0%	6.7%	10.4%
Language	3.2%	5.9%	1.6%	3.6%	0.0%	0.0%	2.0%
Limited or no internet access	3.1%	3.8%	7.9%	2.6%	25.0%	3.3%	3.0%
Limited or no insurance	37.8%	38.7%	23.8%	38.1%	75.0%	43.3%	37.9%
Long wait for a scheduled appointment	55.0%	43.5%	39.7%	57.4%	50.0%	43.3%	57.7%
No appointments available for new patients	38.1%	38.2%	38.1%	39.8%	0.0%	13.3%	37.1%
No appointments available after 5pm or weekends	18.9%	15.6%	28.6%	17.1%	0.0%	26.7%	21.8%
No local medical care available within one hour's drive from my home	2.0%	2.7%	4.8%	2.2%	0.0%	10.0%	0.6%
Responsibility as a caregiver for another person	9.0%	8.1%	19.0%	9.1%	0.0%	6.7%	8.0%
Transportation	10.6%	15.1%	6.3%	10.9%	0.0%	20.0%	8.4%
Work-related issues (time off/leave)	17.2%	14.5%	14.3%	17.2%	25.0%	16.7%	18.4%
Not Listed	3.3%	5.4%	4.8%	3.0%	0.0%	0.0%	3.2%
None of the above	6.3%	5.9%	7.9%	6.3%	0.0%	13.3%	6.0%

Which of the following is the greatest concern:

For children/youth (ages 0-17).

Alcohol use	2.3%	2.2%	1.6%	2.3%	0.0%	0.0%	2.6%
Bullying and cyberbullying	41.8%	39.2%	38.1%	41.2%	50.0%	63.3%	43.1%
Gambling online	0.2%	0.0%	1.6%	0.2%	0.0%	0.0%	0.0%
Gang involvement	1.8%	2.7%	1.6%	1.6%	0.0%	0.0%	2.0%
Gun access/safety	14.9%	15.6%	7.9%	16.0%	0.0%	0.0%	14.4%
Illegal drug use (fentanyl and cocaine)	13.3%	9.7%	17.5%	14.4%	50.0%	10.0%	12.2%
Marijuana use	2.1%	1.1%	3.2%	2.2%	0.0%	0.0%	2.4%
Prescription medication misuse	1.7%	1.6%	1.6%	1.6%	0.0%	0.0%	2.0%
Sex trafficking	1.3%	1.1%	4.8%	1.2%	0.0%	6.7%	0.8%
Tobacco and vaping use	5.5%	8.6%	9.5%	4.5%	0.0%	3.3%	5.6%
Teen pregnancy	1.0%	2.2%	3.2%	0.6%	0.0%	3.3%	0.8%
Not listed	4.4%	3.2%	6.3%	4.4%	0.0%	3.3%	4.6%
None of the above	7.8%	9.1%	3.2%	7.6%	0.0%	10.0%	8.2%

Which of the following is the greatest concern:							
For adults.							
	Total	Williamsburg City	Gloucester County	James City County	King and Queen County	New Kent County	York County
Alcohol use	18.4%	21.5%	20.6%	18.7%	0.0%	10.0%	17.0%
Gambling online	1.2%	3.8%	0.0%	0.8%	0.0%	0.0%	1.2%
Gang involvement	0.7%	1.1%	0.0%	0.3%	0.0%	3.3%	1.2%
Gun access/safety	16.1%	14.5%	6.3%	15.9%	25.0%	10.0%	18.4%
Illegal drug use (fentanyl and cocaine)	18.5%	10.8%	36.5%	18.0%	50.0%	23.3%	19.2%
Marijuana use	1.7%	1.6%	1.6%	1.2%	0.0%	3.3%	2.6%
Prescription medication misuse	12.5%	11.3%	11.1%	13.4%	0.0%	13.3%	11.8%
Sex trafficking	0.5%	1.1%	0.0%	0.2%	0.0%	3.3%	0.8%
Tobacco and vaping use	4.6%	4.3%	7.9%	4.0%	25.0%	0.0%	5.4%
Not listed	7.4%	9.7%	3.2%	7.2%	0.0%	10.0%	7.2%
None of the above	17.0%	17.7%	11.1%	18.7%	0.0%	23.3%	14.2%
Please check the top 3 social concerns impacting health:							
For children/youth (ages 0-17).							
Homelessness	13.3%	15.1%	6.3%	15.1%	50.0%	6.7%	10.4%
Lack of available healthy food	40.9%	38.2%	33.3%	41.3%	50.0%	53.3%	41.5%
Lack of affordable housing	35.7%	37.6%	23.8%	37.8%	50.0%	30.0%	33.1%
Lack of available housing	10.7%	11.8%	12.7%	11.6%	0.0%	3.3%	8.8%
Lack of parenting support/education services	40.9%	33.9%	47.6%	42.3%	25.0%	40.0%	40.5%
Lack of quality schools	12.3%	12.9%	28.6%	11.2%	25.0%	13.3%	11.8%
Lack of a safe place to play or exercise	17.7%	16.7%	23.8%	15.8%	0.0%	20.0%	20.6%
Loneliness/Isolation	24.7%	25.8%	25.4%	21.5%	75.0%	40.0%	28.3%
Violence in homes (adult partner, child, and elderly abuse)	22.8%	24.7%	14.3%	23.7%	25.0%	23.3%	21.4%
Violence in the community (gun and/or gang)	22.0%	17.7%	12.7%	20.9%	0.0%	10.0%	27.5%
Not Listed	6.0%	7.5%	3.2%	5.0%	0.0%	10.0%	7.4%
Please check the top 3 social concerns impacting health:							
For adults.							
Homelessness	24.4%	28.5%	20.6%	25.7%	50.0%	20.0%	21.2%
Lack of available healthy food	24.4%	19.9%	25.4%	23.7%	25.0%	33.3%	26.7%
Lack of affordable housing	64.9%	66.7%	63.5%	65.0%	75.0%	63.3%	64.3%
Lack of available housing	20.8%	22.0%	31.7%	20.8%	0.0%	20.0%	19.0%
Lack of parenting support/education services	9.5%	8.6%	17.5%	7.4%	0.0%	10.0%	12.4%
Lack of quality schools	2.4%	0.5%	1.6%	2.8%	25.0%	0.0%	2.4%
Lack of a safe place to play or exercise	4.1%	3.2%	11.1%	2.9%	0.0%	6.7%	5.4%
Loneliness/Isolation	55.5%	52.7%	42.9%	59.3%	50.0%	50.0%	52.1%

Violence in homes (adult partner, child, and elderly abuse)	21.6%	19.4%	20.6%	22.3%	50.0%	23.3%	21.0%
Violence in the community (gun and/or gang)	18.8%	13.4%	15.9%	17.9%	0.0%	3.3%	23.6%
Not Listed	10.2%	11.8%	6.3%	10.2%	25.0%	10.0%	9.8%
Please select the top 3 personal factors that impact the quality of healthcare that children/youth and/or adults receive.							
	Total	Williamsburg City	Gloucester County	James City County	King and Queen County	New Kent County	York County
Age	23.0%	25.8%	20.6%	24.1%	0.0%	20.0%	20.6%
Race	21.6%	23.7%	14.3%	20.8%	50.0%	13.3%	23.4%
Ethnicity	9.6%	11.3%	7.9%	8.0%	25.0%	6.7%	11.8%
Immigration status	11.4%	13.4%	3.2%	13.7%	25.0%	3.3%	8.0%
Language	11.1%	9.7%	3.2%	12.3%	0.0%	6.7%	11.0%
Sex	2.1%	3.2%	3.2%	2.0%	0.0%	3.3%	1.8%
Gender	6.5%	9.7%	12.7%	5.7%	25.0%	10.0%	5.6%
Level of education	25.1%	28.5%	23.8%	25.8%	25.0%	13.3%	23.4%
Intellectual disabilities	14.6%	15.1%	15.9%	14.3%	0.0%	0.0%	15.8%
Physical disabilities	12.3%	14.0%	6.3%	11.9%	0.0%	13.3%	13.2%
Relationship with medical provider	28.4%	22.6%	36.5%	30.0%	25.0%	50.0%	25.7%
Religious beliefs	1.5%	0.5%	1.6%	1.4%	0.0%	3.3%	2.0%
Sexual orientation	3.8%	5.4%	3.2%	3.4%	0.0%	0.0%	4.2%
Type of health insurance/how I pay for health services	69.5%	66.7%	58.7%	69.9%	75.0%	70.0%	71.3%
None of the above	10.7%	8.1%	15.9%	10.0%	0.0%	20.0%	11.6%
Please check the top 3 environmental health safety concerns in the community where you live.							
Quality drinking water in your home	25.3%	24.7%	22.2%	26.2%	50.0%	50.0%	22.6%
Beach water quality	12.4%	10.8%	17.5%	8.8%	0.0%	0.0%	19.2%
Air quality	35.3%	31.7%	20.6%	36.5%	50.0%	36.7%	36.3%
Rabies	2.7%	2.7%	6.3%	2.7%	0.0%	3.3%	2.4%
Foodborne illness	27.2%	28.5%	14.3%	29.5%	100.0%	3.3%	25.1%
Lead	6.0%	10.2%	7.9%	5.3%	0.0%	6.7%	5.4%
Mold	44.8%	48.9%	54.0%	42.6%	50.0%	33.3%	46.5%
Mosquitoes	44.2%	34.4%	61.9%	37.7%	25.0%	40.0%	57.3%
None of the above	25.0%	25.8%	15.9%	28.1%	0.0%	40.0%	19.6%
Which of the following do you consider to be your most trusted source of health information?							
Faith-based organization	1.5%	3.8%	1.6%	1.5%	0.0%	3.3%	0.6%
Friends/Family	5.2%	3.8%	12.7%	4.8%	0.0%	3.3%	5.6%
Internet	7.1%	8.6%	7.9%	6.3%	0.0%	16.7%	7.4%
Social media (Instagram, X, Facebook)	0.4%	1.1%	1.6%	0.3%	0.0%	0.0%	0.0%
Local or national news sources, newspaper	4.0%	2.2%	4.8%	4.1%	0.0%	0.0%	4.8%
State/local government (health department, mayor, governor)	3.8%	4.3%	7.9%	2.7%	0.0%	3.3%	5.2%
Local health systems website (hospital, free clinics, etc.)	5.2%	7.0%	9.5%	4.1%	0.0%	13.3%	5.4%
My healthcare provider (doctor, pediatrician,	62.9%	55.9%	49.2%	68.8%	50.0%	53.3%	57.5%

physician assistant, nurse)							
My military or VA healthcare provider (doctor, pediatrician, physician assistant, nurse)	1.5%	1.6%	0.0%	0.6%	0.0%	0.0%	3.4%
Federal government (CDC)	8.0%	10.8%	4.8%	6.6%	50.0%	6.7%	9.6%

Stakeholders

Stakeholder Survey Responses for SWRMC and SSCV Service Area Cities		
360 Behavior Consulting	Family in Focus®	Project Nana, Inc.
3e Restoration, Inc.	Hampton and Peninsula Health District	Regina enterprises
Alternatives, Inc.	James City County Department of Social Services	Riverside Health
Armed Services YMCA of Hampton Roads	James City County Neighborhood Development	Safe House Project
Bon Secours	James City Volunteer Rescue Squad	The AFYA Effect Family Healthcare Services
Cancer Action Coalition of Virginia	Jewish Family Service of Tidewater, Inc.	The Williamsburg Dental Group, PLC
Catholic Charities of EVA	King and Queen County Public Schools	Tidewater Arts Outreach
Child Development Resources	Lackey Clinic	Temporary Total Disability
Children's Harbor	LGBT Life Center	Virginia Health Catalyst
Children's Health System	Mathews County School Board	Virginia Workers' Compensation Commission
CHKD	Middle Peninsula-Northern Neck Behavioral Health	VOA Chesapeake and Carolinas
CIVIC Leadership Institute	Middlesex Department of Social Services	Williamsburg Community Chapel
College of William and Mary	MPNN Behavioral Health	Williamsburg Faith in Action
CSG	Mediation Center	Williamsburg Youth Counseling
Community of Faith Mission	Patient Advocate Foundation	York County School Division
Grove Christian Outreach Center	Old Towne Medical & Dental Center	Young Life
Here for the Girls		

Total Responses for SWRMC and SSCV Service Area Cities

	Total	Williamsburg City	Gloucester County	James City County	King and Queen County	New Kent County	York County
Responses	323	87	44	71	20	29	72
Zip Codes							
State, local, or regional department (health, social services)	4.3%	2.3%	0.0%	2.8%	5.0%	0.0%	0.0%
Organization representing medically underserved, low income, and minority populations	8.7%	9.2%	6.8%	9.9%	5.0%	13.8%	9.7%
Health system	20.0%	18.4%	25.0%	16.9%	15.0%	17.2%	18.1%
Nonprofit and community-based organization	36.5%	40.2%	38.6%	35.2%	50.0%	31.0%	38.9%
Academic expert	0.0%	0.0%	0.0%	0.0%	0.0%	0.0%	0.0%
Local government official	0.9%	0.0%	0.0%	1.4%	0.0%	0.0%	0.0%
Local school district	1.7%	0.0%	0.0%	0.0%	5.0%	0.0%	1.4%
Healthcare provider	15.7%	16.1%	22.7%	16.9%	10.0%	24.1%	18.1%
Community health center	4.3%	4.6%	0.0%	7.0%	0.0%	3.4%	2.8%
Health insurance and managed care organization	0.0%	0.0%	0.0%	0.0%	0.0%	0.0%	0.0%
Private business	6.1%	8.0%	6.8%	8.5%	10.0%	10.3%	8.3%
Labor and workforce representative	0.0%	0.0%	0.0%	0.0%	0.0%	0.0%	0.0%
Military representative	0.9%	0.0%	0.0%	0.0%	0.0%	0.0%	1.4%
Civic organization	0.9%	1.1%	0.0%	1.4%	0.0%	0.0%	1.4%
Please check the top 3 most important health concerns:							
For children/youth (ages 0-17).							
Asthma/Allergies	95.6%	97.1%	94.1%	95.7%	100.0%	100.0%	100.0%
Cancer	25.0%	26.3%	37.5%	28.6%	75.0%	66.7%	31.3%
Dental/Oral health	90.5%	87.9%	93.8%	86.7%	85.7%	70.0%	85.2%
Diabetes	34.5%	34.2%	52.6%	37.9%	60.0%	50.0%	46.4%
Heart conditions	27.6%	35.0%	66.7%	33.3%	100.0%	80.0%	25.0%
High blood pressure	9.5%	9.4%	13.3%	11.5%	33.3%	18.2%	9.1%
Maternal health	35.3%	42.3%	46.2%	55.6%	70.0%	70.0%	50.0%
Mental health	81.6%	79.2%	89.5%	75.8%	100.0%	85.7%	79.7%
Neonatal/newborn health	90.9%	94.1%	88.9%	91.7%	100.0%	100.0%	85.7%
Neurological disorders	75.0%	81.8%	83.3%	66.7%	100.0%	85.7%	80.0%
Obesity	88.5%	87.0%	91.7%	89.7%	90.9%	81.3%	86.1%
Sexual transmitted infections	60.0%	71.4%	60.0%	71.4%	100.0%	100.0%	75.0%
Please check the top 3 most important health concerns:							
For adults.							
Asthma/Allergies	13.3%	14.7%	23.5%	13.0%	25.0%	28.6%	10.7%
Cancer	96.4%	100.0%	100.0%	100.0%	100.0%	83.3%	100.0%
Dental/Oral health	47.6%	51.5%	56.3%	50.0%	85.7%	90.0%	51.9%
Diabetes	90.9%	89.5%	84.2%	93.1%	80.0%	85.7%	82.1%
Heart conditions	96.6%	95.0%	88.9%	93.3%	100.0%	80.0%	100.0%
High blood pressure	100.0%	100.0%	100.0%	100.0%	100.0%	100.0%	100.0%
Maternal health	82.4%	76.9%	92.3%	77.8%	80.0%	70.0%	72.7%
Mental health	73.8%	75.3%	78.9%	77.4%	100.0%	90.5%	79.7%
Neonatal/newborn health	18.2%	17.6%	33.3%	25.0%	40.0%	25.0%	28.6%
Neurological disorders	68.8%	68.2%	58.3%	80.0	100.0%	71.4%	70.0%
Obesity	65.6%	71.7%	75.0%	78.1%	81.8%	81.3%	83.3%

Appendices

Sexual transmitted infections	60.0%	42.9%	60.0%	57.1%	100.0%	100.0%	50.0%
Please check the top 3 barriers to accessing healthcare resources and services:							
	Total	Williamsburg City	Gloucester County	James City County	King and Queen County	New Kent County	York County
For children/youth (ages 0-17).							
Cost	70.2%	72.2%	66.7%	68.6%	100.0%	88.9%	71.9%
Did not know where to go or how to find doctor	66.7%	70.4%	85.7%	57.9%	100.0%	80.0%	60.0%
Language	57.6%	53.8%	66.7%	44.4%	50.0%	42.9%	35.3%
Limited or no internet access	30.0%	33.3%	50.0%	42.9%	50.0%	33.3%	50.0%
Limited or no insurance	66.1%	66.7%	56.5%	69.4%	62.5%	66.7%	62.5%
Long wait for a scheduled appointment	83.1%	82.1%	93.3%	78.6%	91.7%	82.4%	80.4%
No appointments available for new patients	73.7%	65.5%	86.7%	75.0%	100.0%	77.8%	80.0%
No local medical care available within one hour's drive from my home	87.5%	90.9%	100.0%	100.0%	100.0%	100.0%	90.0%
Responsibility as a caregiver for another person	60.0%	68.0%	69.2%	64.3%	60.0%	60.0%	80.0%
Transportation	73.7%	72.5%	77.3%	74.4%	100.0%	78.6%	68.4%
Work-related issues (time off/leave)	45.5%	47.1%	55.6%	45.8%	71.4%	50.0%	41.4%
Not Listed	80.0%	75.0%	100.0%	66.7%	100.0%	100.0%	80.0%
None of the above	100.0%	100.0%	100.0%	100.0%	100.0%	100.0%	100.0%
Please check the top 3 barriers to accessing healthcare resources and services:							
For adults.							
Cost	85.1%	83.3%	91.7%	85.7%	100.0%	77.8%	81.3%
Did not know where to go or how to find doctor	78.8%	81.5%	85.7%	84.2%	100.0%	80.0%	85.0%
Language	90.9%	92.3%	88.9%	100.0%	100.0%	100.0%	94.1%
Limited or no internet access	100.0%	100.0%	100.0%	100.0%	100.0%	100.0%	100.0%
Limited or no insurance	79.7%	75.6%	78.0%	86.1%	87.5%	86.7%	78.1%
Long wait for a scheduled appointment	62.0%	60.7%	70.0%	66.7%	75.0%	76.5%	64.7%
No appointments available for new patients	76.3%	75.9%	73.3%	75.0%	83.3%	77.8%	75.0%
Transportation	75.4%	80.0%	81.8%	79.5%	100.0%	92.9%	78.9%
No local medical care available within one hour's drive from my home	56.3%	45.5%	55.6%	42.9%	85.7%	75.0%	50.0%
Responsibility as a caregiver for another person	56.3%	52.0%	53.8%	57.1%	100.0%	80.0%	40.0%
Work-related issues (time off/leave)	79.5%	76.5%	77.8%	83.3%	85.7%	80.0%	86.2%
Not Listed	80.0%	100.0%	100.0%	100.0%	100.0%	100.0%	80.0%

Which of the following is the greatest concern:							
	Total	Williamsburg City	Gloucester County	James City County	King and Queen County	New Kent County	York County
For children/youth (ages 0-17).							
Alcohol use	2.6%	3.4%	2.3%	4.2%	0.0%	3.4%	2.8%
Bullying and cyberbullying	33.0%	28.7%	31.8%	29.6%	20.0%	20.7%	26.4%
Gambling online	0.0%	0.0%	0.0%	0.0%	0.0%	0.0%	0.0%
Gang involvement	4.3%	5.7%	6.8%	7.0%	5.0%	6.9%	5.6%
Gun access/safety	20.0%	8.0%	9.1%	4.2%	15.0%	10.3%	6.9%
Illegal drug use (fentanyl and cocaine)	3.5%	4.6%	6.8%	5.6%	15.0%	6.9%	5.6%
Marijuana use	0.9%	1.1%	0.0%	1.4%	0.0%	3.4%	1.4%
Prescription medication misuse	3.5%	3.4%	0.0%	1.4%	0.0%	0.0%	4.2%
Sex trafficking	1.7%	2.3%	4.5%	2.8%	10.0%	6.9%	2.8%
Tobacco and vaping use	15.7%	12.6%	15.9%	15.5%	15.0%	6.9%	13.9%
Teen pregnancy	4.3%	5.7%	0.0%	1.4%	0.0%	3.4%	4.2%
Not listed	21.7%	24.1%	22.7%	26.8%	20.0%	31.0%	26.4%
Which of the following is the greatest concern:							
For adults.							
Alcohol use	20.0%	18.4%	15.9%	22.5%	10.0%	17.2%	19.4%
Gambling online	0.9%	1.1%	2.3%	1.4%	5.0%	3.4%	1.4%
Gang involvement	0.9%	1.1%	2.3%	1.4%	0.0%	0.0%	1.4%
Gun access/safety	4.3%	4.6%	2.3%	2.8%	5.0%	3.4%	2.8%
Illegal drug use (fentanyl and cocaine)	20.0%	18.4%	29.5%	16.9%	45.0%	20.7%	19.4%
Marijuana use	7.0%	6.9%	6.8%	7.0%	10.0%	6.9%	6.9%
Prescription medication misuse	7.0%	8.0%	6.8%	5.6%	0.0%	3.4%	5.6%
Sex trafficking	2.6%	2.3%	2.3%	2.8%	5.0%	6.9%	1.4%
Tobacco and vaping use	10.4%	10.3%	4.5%	8.5%	5.0%	6.9%	9.7%
Not listed	27.0%	28.7%	27.3%	31.0%	15.0%	31.0%	31.9%
Please check the top 3 social concerns impacting health:							
For children/youth (ages 0-17).							
Homelessness	36.1%	44.4%	45.5%	36.4%	75.0%	33.3%	37.5%
Lack of available healthy food	82.7%	80.4%	86.2%	82.6%	100.0%	81.8%	79.2%
Lack of affordable housing	56.8%	56.9%	67.7%	57.1%	86.7%	61.9%	48.0%
Lack of available housing	51.4%	42.9%	66.7%	89.5%	87.5%	40.0%	42.1%
Lack of parenting support/education services	84.7%	83.6%	89.7%	82.6%	84.6%	89.5%	81.6%
Lack of quality schools	92.0%	90.9%	77.8%	85.7%	75.0%	71.4%	92.9%
Lack of a safe place to play or exercise	83.3%	78.3%	88.9%	78.9%	100.0%	42.9%	80.0%
Environmental safety	55.6%	42.9%	75.0%	62.5%	100.0%	66.7%	60.0%
Violence in homes (adult partner, child, and elderly abuse)	61.2%	63.2%	77.3%	62.1%	71.4%	63.6%	66.7%
Violence in the community (gun and/or gang)	54.5%	66.7%	64.3%	72.2%	66.7%	66.7%	64.0%

Please check the top 3 social concerns impacting health:

	Total	Williamsburg City	Gloucester County	James City County	King and Queen County	New Kent County	York County
For adults.							
Homelessness	91.7%	88.9%	90.9%	95.5%	100.0%	100.0%	100.0%
Lack of available healthy food	69.3%	71.4%	62.1%	67.4%	80.0%	72.7%	70.8%
Lack of affordable housing	91.4%	89.7%	93.5%	93.9%	100.0%	95.2%	96.0%
Lack of available housing	89.2%	87.5%	100.0%	89.5%	100.0%	100.0%	94.7%
Lack of parenting support/education services	45.8%	49.1%	51.7%	45.7%	69.2%	52.6%	49.0%
Lack of quality schools	16.0%	18.2%	44.4%	28.6%	75.0%	57.1%	21.4%
Lack of a safe place to play or exercise	30.0%	34.8%	33.3%	31.6%	50.0%	71.4%	30.0%
Environmental Safety	77.8%	85.7%	75.0%	75.0%	100.0%	100.0%	80.0%
Violence in homes (adult partner, child, and elderly abuse)	75.5%	71.1%	77.3%	72.4%	100.0%	90.9%	73.3%
Violence in the community (gun and/or gang)	64.5%	63.0%	64.3%	61.1%	66.7%	66.7%	68.0%

Please select the top 3 personal factors that impact the quality of healthcare that children/youth and/or adults receive.

Age	48.4%	57.9%	62.5%	35.0%	100.0%	83.3%	75.0%
Race	95.2%	100.0%	90.0%	100.0%	100.0%	100.0%	60.0%
Ethnicity	76.9%	70.0%	100.0%	75.0%	100.0%	100.0%	83.3%
Immigration status	81.0%	82.9%	92.9%	80.0%	100.0%	76.9%	73.3%
Language	83.3%	82.8%	81.8%	85.2%	66.7%	57.1%	66.7%
Sex	100.0%	100.0%	100.0%	100.0%	100.0%		100.0%
Gender	60.0%	50.0%	66.7%	33.3%	100.0%	100.0%	100.0%
Level of education	48.1%	57.5%	61.9%	44.8%	50.0%	33.3%	75.0%
Intellectual disabilities	78.4%	76.9%	83.3%	81.0%	66.7%	80.0%	51.4%
Physical disabilities	61.5%	55.6%	77.8%	64.3%	66.7%	66.7%	81.8%
Relationship with medical provider	57.6%	62.5%	76.9%	62.5%	87.5%	88.9%	54.2%
Religious beliefs	100.0%	100.0%	100.0%	100.0%	100.0%	100.0%	100.0%
Sexual orientation	83.3%	100.0%	100.0%	80.0%	100.0%	100.0%	100.0%
Type of health insurance/how I pay for health services	77.6%	79.3%	90.3%	81.4%	93.3%	84.2%	76.0%

Please select the top 3 personal factors that impact the quality of healthcare that children/youth and/or adults receive.

Age	72.4%	68.4%	75.0%	80.0%	40.0%	50.0%	75.0%
Race	57.1%	58.8%	80.0%	75.0%	100.0%	85.7%	60.0%
Ethnicity	92.3%	90.0%	100.0%	100.0%	100.0%	100.0%	83.3%
Immigration status	81.0%	80.0%	78.6%	80.0%	100.0%	100.0%	86.7%
Language	81.0%	89.7%	81.8%	77.8%	66.7%	100.0%	90.5%
Sex	100.0%	100.0%	100.0%	100.0%	66.7%	100.0%	100.0%
Gender	60.0%	75.0%	66.7%	100.0%	100.0%	100.0%	50.0%
Level of education	88.5%	85.0%	81.0%	86.2%	100.0%	100.0%	85.7%
Intellectual disabilities	67.6%	61.5%	58.3%	71.4%	100.0%	80.0%	59.1%
Physical disabilities	69.2%	66.7%	55.6%	71.4%	100.0%	100.0%	53.3%
Relationship with medical provider	90.9%	87.5%	92.3%	93.8%	100.0%	100.0%	91.7%
Religious beliefs	66.7%	66.7%	100.0%	66.7%	100.0%	100.0%	66.7%
Sexual orientation	33.3%	25.0%	33.3%	40.0%	100.0%	33.3%	25.0%
Type of health insurance/how I pay for health services	86.8%	84.5%	77.4%	83.7%	100.0%	94.7%	84.0%

Please check the top 3 environmental health safety concerns in the community where you live.

Quality drinking water in your home	32.5%	33.7%	39.5%	31.4%	52.6%	41.4%	29.6%
Beach water quality	7.9%	9.3%	4.7%	4.3%	5.3%	3.4%	4.2%
Air quality	36.0%	36.0%	39.5%	30.0%	21.1%	27.6%	38.0%
Rabies	0.0%	0.0%	0.0%	0.0%	0.0%	0.0%	0.0%
Foodborne illness	24.6%	30.2%	18.6%	18.6%	5.3%	20.7%	26.8%
Lead	16.7%	14.0%	14.0%	18.6%	10.5%	20.7%	16.9%
Mold	54.4%	50.0%	48.8%	55.7%	52.6%	44.8%	54.9%
Mosquitoes	21.1%	17.4%	16.3%	17.1%	31.6%	13.8%	16.9%
None of the above	29.8%	29.1%	34.9%	31.4%	42.1%	37.9%	28.2%

Focus Groups

Focus Group Demographics					
Total Focus Groups: 47 Participants					
Sex of participants (gender identified)	Female	29		Male	18
Age range of participants	18-25	26-39	40-54	55-64	65+
		6	13	8	19
Race/ethnicity of participants	White	Black	Asian	Hispanic	Native American
	34	10	0	0	1
Zip codes	23539	23061 (8)	23168	23175	23183 (5)
	23185	23224	23140	23060	23079 (2)
	23188 (8)	23601 (2)	23602	23608	23692 (4)
	23693 (4)	23091	23072	23110	
Prefer not to say	2				
Summary of Key Findings (CHATGPT was used to summarize notes)					
(Complete notes upon request through our Feedback Form)					
Summary of Key Findings					
Topic 1: What serious health problems are in your community for children (0-17) and for adults (18+)?					
Health Problems in the Community & Potential Solutions					
Key issues identified for children					
<ul style="list-style-type: none"> • Mental Health Issues: Anxiety and depression, largely attributed to social media. Lack of mental health services for children. • Obesity & Nutrition: Increase in BMI; food deserts limit fresh food access. • Health Literacy: Teens lack knowledge on obtaining health insurance and reading nutrition labels. • Social Skills & Adjustment Issues: Post-COVID effects—difficulty socializing, problem-solving, and adjusting to change. 					
Key issues identified for adults					
<ul style="list-style-type: none"> • Substance Use & Mental Health: Need for detox services, mental health counselors, and same-day treatment. Mistrust in healthcare leads to missed appointments. • Chronic Diseases: Increasing diabetes rates; need for diabetes education. • Healthcare Access Issues: Long wait times, lack of providers, inadequate insurance. • Homelessness & Food Insecurity: 30% rise in food pantry use; lack of fresh food options. • Transportation: Limited access to healthcare and community centers due to lack of transportation. • Loneliness in Seniors: Isolation due to lack of mobility; stigma around senior meal services. • Aging & Cognitive Decline: Dementia is a major concern; lack of geriatric care managers. • Rehabilitation Services: Shortage of rehab facilities, requiring travel to other areas. 					
Suggestions and Needs					
<ul style="list-style-type: none"> • Building Trust in Healthcare: Peer recovery specialists to guide patients through services. • Mental Health Support: Expand resources for both children and seniors. • Health Education: Teach health literacy from a young age. • Food Access: Increase fresh food availability in underserved areas. • Transportation Services: Free or low-cost transport for medical and social services. • Senior Care & Socialization: More community programs and geriatric care management. 					

Topic 2: What are some of the environmental and social conditions that affect quality of life for children and adults living in your community?

Summary of the key environmental and social conditions affecting quality of life for children and adults in the community:

Key issues identified for children

- **Housing instability:** Increase in homeless families, living in hotels, couch surfing.
- **Education & healthcare barriers:** Lack of knowledge on school system, vaccine hesitancy, conditional enrollments due to missing vaccinations/physicals. Parents prioritize food over healthcare.
- **Transportation issues:** Difficulties accessing doctor appointments, leading to last-minute visits.
- **Mental health concerns:** Lack of safe spaces for children and teens to discuss issues. Rising mental health challenges due to social media, misinformation, and self-image issues.
- **Nutrition & food security:** 400 children visit food pantry monthly; loss of programs supporting college readiness due to funding cuts.
- **Vaping epidemic:** Education efforts exist but are largely ineffective without addressing underlying stress factors.

Key issues identified for adults

- **Healthcare access barriers:** Limited doctor availability, long appointment wait times (e.g., 9-month wait for a cardiologist), poor communication with providers, and stigma around mental health care.
- **Housing & economic struggles:** Affordable housing shortage, rising homelessness, minimum wage too low while costs rise, affecting access to healthcare.
- **Transportation issues:** Lack of reliable transport for doctor visits, daily needs, and senior mobility.
- **Mental health stigma:** Social stigma prevents people from seeking professional help for mental health concerns.
- **Elderly care challenges:** Loneliness, lack of companionship, difficulty accessing food, and hoarding concerns. Limited assisted living options, high costs, and barriers to accessing care.
- **Lack of community spaces & infrastructure:** Few safe places for exercise, lack of sidewalks/bike paths, and no public community centers for younger adults.
- **Food security & health literacy:** Many struggle with navigating the healthcare system, reading nutrition labels, and making healthy food choices.

General Observations

- **Mistrust of healthcare system** is a significant barrier to care.
- **Social isolation** among seniors and post-COVID youth has worsened.
- **Access to essential services** (housing, healthcare, food, and transportation) remains a challenge.
- **Gun violence** is on the rise, especially in certain areas.
- **Kindness & community connection** are missing elements that could improve overall well-being.

Topic 3: What do you think about the health-related services that are available in your community, including medical care, dental care, and mental healthcare for children and adults?

Health-Related Services in the Community: Key Concerns and Potential Solutions

Key issues identified for children

- **Limited Dental Access:** Many children face difficulties accessing dental care due to paperwork barriers and lack of available appointments. Elementary and middle school students have some access through health department services, but additional outreach is needed.
- **Lack of General Awareness:** Many families are unaware of available services. Social media helps, but not all families have access or use it. More comprehensive community outreach is needed.
- **Need for a Mobile Clinic:** A mobile health clinic could address gaps in medical, dental, and mental health services for children in underserved areas.
- **Emergency Services Overburdened:** Non-emergency calls are clogging the system, leading to long wait times (up to three hours) for true emergencies.
- **Autism & Specialized Care Barriers:** Diagnosing autism and accessing therapy (such as speech therapy) is difficult, often requiring legal intervention due to insurance issues. There is also confusion about which specialists to see, and services vary greatly by locality.
- **Long Wait Times for Dental Care:** Delays in routine cleanings, with some dentists dropping insurance due to low reimbursements.

Key issues identified for adults

- **Limited Maternity Care:**
 - No labor and delivery (L&D) services in the county or surrounding counties; most women travel to Richmond.
 - Lack of OB/GYN providers and licensed doulas in the health district.
 - Lack of support services for young mothers, especially teenage mothers.
- **Limited Support for Specific Conditions:** No local support groups or specialized resources for Parkinson’s disease or Huntington’s disease.
- **Homelessness and Dual Diagnosis Challenges:** Growing tent encampments indicate a rising issue with homelessness, particularly among individuals with co-occurring mental health and substance abuse disorders.
- **Lack of General Healthcare Knowledge:** Many adults struggle to navigate the healthcare system and are unaware of available resources such as free clinics.
- **Transportation Barriers:** Many patients struggle to reach medical appointments due to lack of reliable transportation.
- **Access to Specialists:** Long wait times for dermatologists, cardiologists, and other specialists. For example, dermatology appointments may take six months, and cardiology visits are often annual even for non-urgent cases.
- **Changing Insurance Coverage:** Many patients lose access to their doctors due to insurance changes (e.g., TPMG no longer accepting Humana, VA healthcare delays in finding providers).
- **Telehealth and MyChart Improvements:** Virtual appointments have expanded access to care, and platforms like Sentara MyChart and Riverside MyChart help with communication. However, these systems need better integration to share patient information seamlessly.

Cross-Cutting Concerns for Children and Adults:

- **Cost of Care and Insurance Barriers:** High costs of medications (e.g., Ozempic), expensive dental procedures, and insurance coverage gaps make care unaffordable.
- **Urgent Care Challenges:** Many urgent care centers require appointments, making walk-ins difficult. Some locations, like Williamsburg Urgent Care near Fresh Market, provide better service.
- **Trust Issues with Healthcare Providers:** Patients feel some providers prioritize profit over care. Doctors recommend expensive procedures that may not be necessary.
- **Lack of Communication from Doctors:** Patients often receive inadequate explanations about diagnoses and treatment plans. Stronger advocacy and better doctor-patient communication are needed.
- **Mental Health Crisis Response Needs Improvement:** Patients fear seeking help due to potential hospitalization. Alternative crisis intervention models, such as telehealth counseling, could help reduce unnecessary institutionalization.

Potential Solutions and Next Steps:

1. Expand Public Awareness Efforts:
 - Develop a centralized resource guide for health services, available online and in print.
 - Increase outreach through schools, community centers, and local organizations.
2. Improve Access to Care:
 - Establish a mobile clinic for underserved areas.
 - Advocate for local L&D services and licensed doulas.
 - Improve transportation options for medical visits.
3. Enhance Mental Health Support:
 - Increase funding for mental health services, including non-hospital crisis interventions.
 - Develop local support groups for conditions like Parkinson’s and Huntington’s disease.
4. Strengthen Healthcare Coordination:
 - Improve insurance navigation assistance.
 - Enhance integration between MyChart platforms.
 - Address provider shortages in dental and specialist care.

By addressing these challenges and implementing these solutions, the community can improve access to essential health services and overall well-being.

Topic 4: Do you feel like it is hard to access healthy, fresh food in your community?
 What keeps you from trying new fresh fruits and/or vegetables?

Access to Healthy, Fresh Food in the Community

Key issues identified for children and adults

Lack of Education & Awareness:

- Many individuals, both children and adults, lack knowledge about healthy foods, nutritional value, and portion control.
- Limited understanding of food preparation, especially for fresh produce such as pomegranates or squash.
- Cultural differences influence food choices, leading to hesitancy in trying new foods.

Financial Barriers:

- Healthy foods, especially fresh produce and organic options, are more expensive than processed alternatives.
- Individuals with lower incomes prioritize affordability over nutrition, often choosing processed and fast food.
- Food pantry recipients may receive fresh produce but struggle to utilize it due to lack of knowledge and equipment.

Availability & Accessibility:

- Fresh produce is not always available at convenience stores like Dollar General.
- Despite local farmland, much of the produce in stores is imported rather than locally sourced.
- School food programs provide weekend food, but much of it is processed rather than fresh.
- Limited fresh fruit and vegetable options in school cafeterias.
- Transportation barriers prevent some individuals from accessing grocery stores and farmers' markets.

Convenience & Lifestyle Barriers:

- Processed foods are more convenient and require less preparation time compared to fresh foods.
- Working parents and busy lifestyles make it challenging to cook fresh meals.
- Habitual eating patterns favor convenience foods over fresh, home-cooked meals.
- Some elderly individuals receiving Meals on Wheels do not take the time to reheat or prepare their meals.

Potential Solutions

1. Enhanced Education & Awareness:
 - Implement community workshops on nutrition, meal prep, and cooking techniques for fresh foods.
 - Provide recipe cards and cooking instructions with food pantry distributions.
 - Schools and community programs should incorporate lessons on healthy eating and food preparation.
 - Address cultural food preferences and introduce diverse recipes to promote acceptance of new foods.
2. Financial & Accessibility Improvements:
 - Increase affordability of fresh foods through subsidies, discounts, and community-supported agriculture (CSA) programs.
 - Expand availability of fresh produce at local convenience stores and food pantries.
 - Encourage local grocery stores to offer smaller portions of fresh foods to reduce waste for single-person households.
 - Promote frozen vegetables as a cost-effective and long-lasting alternative to fresh produce.
3. Community & School-Based Initiatives:
 - Strengthen school programs to incorporate fresh fruits and vegetables into student meals.
 - Encourage community food-sharing programs and partnerships with local farms.
 - Increase awareness of local farmers' markets and transportation assistance for those who need it.
 - Develop programs teaching meal prep for individuals with limited time and resources, such as quick, healthy meal plans.

By addressing these challenges through education, financial assistance, and community initiatives, access to healthy, fresh food can be improved for all members of the community.

Topic 5: What is working in your community that can help residents live healthier lives?

Key strengths identified for children and adults

Community Resources & Collaboration

- Many **Community-Based Organizations (CBOs)** exist but are underrated and not well known.
- A **resource guide** will be developed in the spring to increase awareness.
- Schools offer **resource books** to families.
- **Peer Recovery Specialists** (42 in the Northern Neck/Middle Peninsula) are active in the community.
- Collaboration among **community partners** is growing to meet local needs.
- Health providers are transitioning to **community-based roles** rather than just clinical settings.

Children & Youth Programs

- **YMCA** provides a safe, healthy environment for kids.
- **Sports opportunities** exist through schools, recreation leagues, and **YMCA Leaders Club**, emphasizing fitness and participation regardless of skill level.
- **Strong arts community** encourages creative activities like painting, singing, and poetry.

Adult & Senior Support

- **Collaborative efforts** between organizations provide food drives, educational events (e.g., Alzheimer’s and Parkinson’s awareness), and public service announcements.
- **Health systems are adapting** to funding shortages by finding new ways to deliver services.
- **Better medical communication is needed** (e.g., TPMG, Sentara, and Riverside do not share records; military and civilian doctors struggle with data access).

Access to Health & Fitness

- **Public parks and open spaces** encourage outdoor activity.
- **Senior Centers** offer community engagement and wellness programs.
- **Silver Sneakers** allows seniors to access multiple gyms.
- **James City County Rec Center** provides extensive fitness and recreational opportunities.
- **Meals on Wheels** delivers food and provides social interaction, also checking on those who don’t answer the door.

Technology & Health Information

- **Online health resources** like WebMD and Google help people make informed health decisions.
- **Sentara MyChart** enables quick access to medical test results and direct messaging with doctors.
- **AI tools (ChatGPT) and voice assistants (Alexa)** help manage health, medication reminders, and daily schedules.
- **Potential for tech-company partnerships** to create tools for aging populations, such as TV-based reminders.

Transportation & Accessibility

- Transportation remains a **major barrier**, especially in York County.
- **Shuttle service suggestions:** Regular routes to grocery stores, Walmart, libraries, senior centers, and community hubs.
- Weekly trips to destinations like malls, Riverwalk, and Williamsburg could improve access.

Community Support & Neighborly Care

- **Encouraging neighborly support:**
 - Check on elderly or sick neighbors.
 - Offer to help with errands.
 - Alert authorities if mail or newspapers pile up.
 - Small actions build stronger, healthier communities.

Topic 6: What do you think your local health systems (hospitals and primary care) and health departments can do to improve the health and wellness in your community?

Key Areas for Improvement in Local Health Systems

Reducing Long Wait Times for Appointments

- Wait times for **new and existing patients** are too long (4+ months).
- Need to **fill open provider slots** and increase staffing.
- Expand access to **mobile clinics** and **telehealth hubs**.

Expanding Telehealth & Internet Access

- Telehealth could improve access, but **internet connectivity issues** remain.
- Need **telehealth hubs throughout the county** (in collaboration with partners).
- Explore **regional discussions** and funding to improve telehealth accessibility.

Addressing Basic Needs (Beyond Healthcare)

- Increase access to **clean clothing and laundry services** for homeless and underserved populations.
- Secure **a full-time dentist** for the community (current part-time providers are not sufficient).
- Address fear over **loss of SNAP benefits and Medicaid restructuring**, which may limit healthcare access.

Improving Health Literacy & Conflict Resolution

- **Children:** Schools should focus on **health literacy, conflict resolution, and emotional well-being** post-COVID.
- **Adults:** Host **community health fairs** with screenings, resources, and education on navigating healthcare.

Increasing Collaboration & Resource Sharing

- Agencies should collaborate on a **unified resource guide** (currently, each has its own booklet).
- Better **integration into the health system** to help people understand where to go and what services are available.
- Improve **communication between medical groups** (e.g., TPMG, Sentara, Riverside, military doctors).

Enhancing Transportation Options

- **Lack of transportation** is a barrier to healthcare, mental health, and even essential services like haircuts.
- Need **homebound medical services** (who do they call for in-home care?).
- A **shuttle service** for doctor's appointments, pharmacies, and health fairs would improve access.

Medication & Pharmacy Challenges

- **Refilling prescriptions while traveling** is difficult due to insurance restrictions and doctor approvals.
- Elderly individuals often **struggle with medication management** and need additional support.

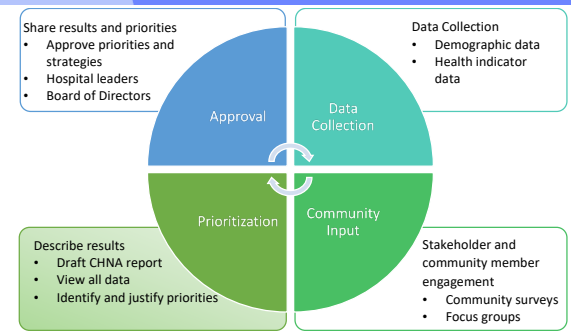
Leveraging Technology for Better Health Management

- Partner with **tech companies** to create **tools for aging populations** (e.g., notifications on TVs for appointments, medication reminders).
- **Teach people to use Alexa** for reminders (appointments, medication schedules, daily tasks).

Partnering with Schools & Colleges

- Explore **high school and college internship programs** where students assist seniors and underserved individuals in navigating healthcare systems.

Appendix D: Prioritization Process



The process to determine whether each health issue qualified as a CHNA health need drew upon both secondary and primary data, as follows:

1. A health need category was identified as high need based on secondary data collected if it met any of the following conditions:
 - Overall severity: at least one health indicator need was much worse or worse than the state.
 - Disparities: at least one health indicator need was much worse or worse than the state for any defined racial/ethnic group.
 - External benchmark: health indicator data showed worse than an external goal (e.g., state average, county data, and Healthy People 2030).
2. A health need category was identified as high need based on primary data if it was identified as a theme in a majority of community survey responses and focus groups.
3. Classification of primary and secondary data was combined into the final health need category using the following criteria:
 - True Health Need Priority: High need indicated in both secondary and across all types of primary data. Sentara and CHNA partners confirm these health needs.
 - Possible Health Need: High need indicated only in secondary data and/or some primary data. These health issues were further discussed with Sentara and CHNA partners to determine final status.
 - Not a High Priority: High need indicated in only one or fewer sources.

Description of the Community Needs Identified

For each priority concern that has been identified, the related threats and opportunities are listed.



Behavioral Health	
<p>Threats Posed to the Community</p> <ul style="list-style-type: none"> • Increased substance use • Perception of fear and stigma • Increase in health care needs • Not enough services available • Emergency Room overutilization • Impacts both youth and adults, increasing suicidal thoughts 	<p>Opportunities Created for Community</p> <ul style="list-style-type: none"> • Increase access to mental health services and education • Education for community, families, teachers, youth, parents • Opportunity to provide more resources and opportunities for providers to make better referrals • Collaboration on all fronts to make a difference • Telepsych services within the hospital • Additional staff support: Behavioral Health Navigator based in ED to work with patients (ED/ Inpatient) and may follow up to 30 days to ensure connection to Mental Health resources.
Chronic Disease	
<p>Threats Posed to the Community</p> <ul style="list-style-type: none"> • Chronic disease utilizes a lot of resources (doctors, time, costs) • Hard to get PCPs to refer clients • Emergency room admissions • Less physical activity among youth and adults • Lack of physical activity in schools • Access to healthy food • Higher healthcare costs • Alzheimer’s will have a large effect on the aging population 	<p>Opportunities Created for Community</p> <ul style="list-style-type: none"> • Opportunities to collaborate with community partners to educate and provide services in the community (diabetes programs, screening events, health fairs) • Aging in place, healthy lifestyles for aging communities in rural areas • Mammography services, no PCP required for referral • Community garden, healthy food education • Mobile clinic services
Social Drivers of Health	
<p>Threats Posed to the Community</p> <ul style="list-style-type: none"> • Reduced opportunity for low- and middle-income families to graduate college • Less educated society • Less access to medications • Increase of Emergency Room visits vs. primary/preventive care • Making choices of healthcare versus dinner 	<p>Opportunities Created for Community</p> <ul style="list-style-type: none"> • Grant funding for partners to provide trade school opportunities and education • Identify programs that help with payments for bills/Medicaid, Medicare specialist to assist with insurance applications • Provide education for patients to talk about true healthcare costs • Providing education to address healthcare programs for prevention • Utilizing diverse Community Health Workers • Better connections with nonprofits and community health centers to identify and address health needs