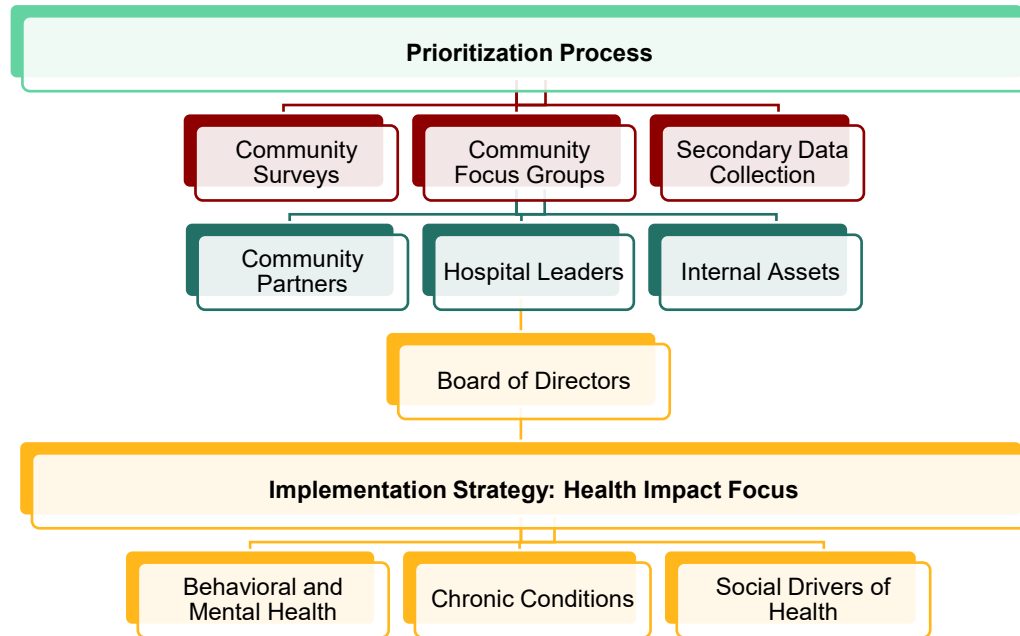


**Joint Community Health Needs Assessment Implementation Strategy for:
Sentara Obici Hospital,
BelleHarbour Ambulatory Surgery Center, LLC. and Sentara Obici Ambulatory Surgery, LLC.
Adoption Date: October 21, 2025 | Start Date: January 1, 2026**

This implementation strategy identifies the actions that the hospital and surgery centers are jointly undertaking to address the health problems identified in the community health needs assessment, consistent with the requirements described in section 501(r)(3) of the Internal Revenue Code per the Patient Protection and Affordable Care Act. The actions within this Implementation Strategy are for both the hospital and the surgery centers and are guided by the hospitals mission and goals. The hospital and the surgery centers define their communities to be identical. The hospital and surgery centers reserve the right to amend this Implementation Strategy as circumstances warrant. For example, certain needs may become more pronounced and require enhancements to the described strategic initiatives.



Sentara Health system-wide focus

Improve Behavioral Health and Mental Well-Being



Improve Chronic Conditions and Avoidable Health Outcomes



Address and Invest in Social Drivers of Health



Implementation Plan	From CHNA Research		From Asset Mapping	
	Identified Need	Population at Risk	Existing Community Asset*	Potential Partner
Priority Area: Improve Behavioral Health and Mental Well-Being				
Goal: Enhance education to improve the mental and emotional well-being of those living in the community.	Data Collection Survey Results Focus groups Emergency Room Data	Youth Adults Low-Income Uninsured Underinsured	Social Media Community Health Fairs Behavioral Health Service Line Array Behavioral Health Services	Genieve Shelter
Strategy: Partner with community-based organizations to increase access to behavioral health services.				
Objective: Support education efforts to improve community awareness regarding mental health resources.				
Priority Area: Improve Chronic Conditions and Avoidable Health Outcomes				
Goal: Reduce the impact of chronic conditions, chronic disease, and preventable health outcomes on morbidity and mortality.	Data Collection Survey Results Focus Groups	Aging Low-Income Uninsured Underinsured	Social Media Community Health Fairs	Western Tidewater Free Clinic,
Strategy: Increase access to care, chronic disease education, availability of health education resources, and disease management education.				
Objective: To increase community awareness regarding prevention and screening for chronic conditions and diseases.				
Priority Area: Address and Invest in Social Drivers of Health				
Goal: Develop and implement collective impact strategies to align healthcare providers and community-based organizations to address social drivers of health.	Data Collection Survey results Focus Groups	Aging Low-Income Uninsured Underinsured Unhoused At-risk populations	Social Media Community Health Fairs Sentara Community Care Clinics	Obici Healthcare Foundation, WINKS (With Intentional Kindness and Support), Hope for Suffolk
Strategy: Leverage partnerships to increase awareness and availability of SDOH resources.				
Objective: To enhance partnerships to provide community education and resources.				